

COULISSE JOURNAL

COULISSE

since 1992

5

JANUARY
2017





RECHARGE

Finding time to nourish and recharge yourself isn't a luxury nowadays. Life by its very nature can be stressful, especially in the hectic, frenetic pace of modern life. The overload of information, required multitasking and continuous accessibility with 24/7 availability, oft demands a lot of us. Especially in today's world of uncertain times and global problems, people show an increasing need to surround themselves with senses of security, tranquility and peace. Between the hustle and bustle of everyday life, we search for moments of reflection to find again our restful moments. We need these moments to be able to come back into balance and to perform well in our daily life.

Coulisse responds to this changing way of life, in helping to create a relaxing environment at home and in the

public space. The collections highlighted in this journal are meant as a source of inspiration. The textile fabrics and the wide range of soft and white tones in our collection, contribute to the feeling of harmony, balance and innocence, elements which we are increasingly looking for. The collections show a transition of styles in which female shapes are combined with more masculine clean lines. This is also reflected in material choices, where hard and soft materials complement each other.

Recharge is more than the theme of this journal, it is what we need in the search for a more balanced life. Let's start today and take your time to relax a few minutes and enjoy this beautiful journal to its full extent!



FOREWORD

In 2017, everything comes together for Coulisse. The perfection we have achieved in our window covering collections has been extended to our whole product line and service offering. As a result, our blind systems are available in matching designs, styles and colors, offering a suitable solution for every window. Coulisse will further professionalize on all organizational levels within the company. We are recharging the battery to make the next steps towards maturity.

One of the goals in this respect is to excel in our service to our customers. For doing so, we will focus even more on the current requirements of our customers. We are continuously working on improving our webshop 'my.coulisse.com' and further expanding the online product range on this platform. From an environmental

awareness and corporate social responsibility, Coulisse continues to implement the Lean principles throughout the whole organization. We will also be taking our first steps in the contract market. With new fabrics, collections, images and video material, we are preparing ourselves for entering this new market segment.

Through this journal, we give you a sneak preview of the modern and mature architectonic style, with which Coulisse will present itself in the contract market. It gives you a glimpse into what keeps us busy today and how we respond to the world in our own positive way. We hope to inspire you with this journal and to help you recharge your battery to reach your next level!

Christiaan Roetgering





During the first quarter of this year we will gradually be launching a range of new screen fabric qualities. The new fabrics are an addition to the existing screen collection and are suitable for both the residential and the contract market. Besides excellent functional properties that

contribute to saving energy costs and ensure a healthier indoor climate, the new screens will stand out for their fashionable nature. This design approach adds a new dimension to the screen product and provides a decorative appearance both inside as outside.





In the last years, the double roller blind market has experienced a tremendous growth. We especially see a growing demand for materials with a different look and style. A trend in today's market is the use of soft color tones and tactile materials. We therefore will be presenting a series of new double roller fabrics

with a natural touch in very soft and refined powdery color tones. Combined with their unrivalled functionality in creating the perfect light, decoration style and privacy, these new double roller blind textiles perfectly suit the requirements for today's consumer.





Aluminium Venetian blinds combine slick design and perfect functionality. They offer a practical solution for both home and office. The metallic colors in our 50 mm aluminium collection are inspired on Rolls-Royce colors. As a result, they have a chic yet powerful look and contribute to an appealing masculine look in the room. The collection is also available in a perforated version that allows more light transmittance.



RF-MUN-FR-BO-5160 SHELL - 200 / 300 CM



Brunello Cucinelli



Emily Chair for Gärsnäs



RF-WINCHESTER-0900
CASTLE ROCK - 300 CM



Zaha Hadid Architects



SCR-3005-06 EBONY - 200 / 250 / 300 CM

NATURAL STRUCTURES

RF-RICHMOND-1000 FROST - 300 CM



Kelly Wearstler Furniture



David Chipperfield Architects



RF-MEXICO-5102 SAND - 280 CM



Paul Kaloustian

An ongoing trend is the use of natural colors and tactile materials. They create a pure and serene look that radiates a comfortable feel. When applied in window coverings, the natural textile structure of the materials make the interior come closer to us. They generate a cuddlier appearance that is less aloof. The range of luxury fabrics with this natural feel in our collection allow for injecting warmth, style and emotion into the interior. Particularly in the project market this is a new and innovative design approach.



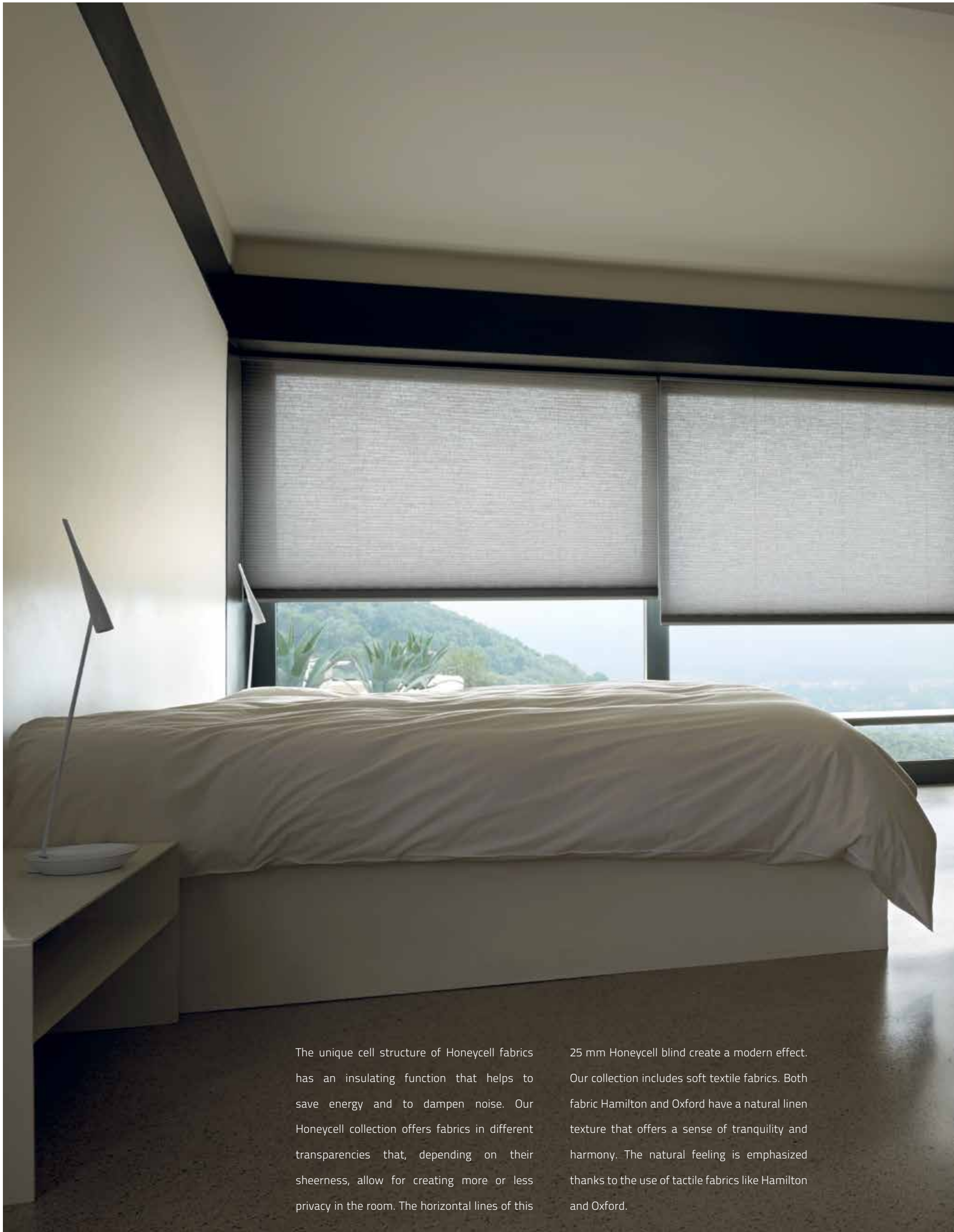
ULTIMATE SYSTEM



15

DESIGNER OPTION
ULTIMATE NATURAL ALUMINIUM

Our broad product range for panel blinds includes a wide variation of fabrics that perfectly combine with our range of panel blind systems. The Ultimate system owes its true design look and feel to the use of exclusive materials as well as its modern design. The modular system is available in three exclusive finishes: natural aluminum, chrome and matt brushed stainless steel. All Coulisse systems are available with automation.

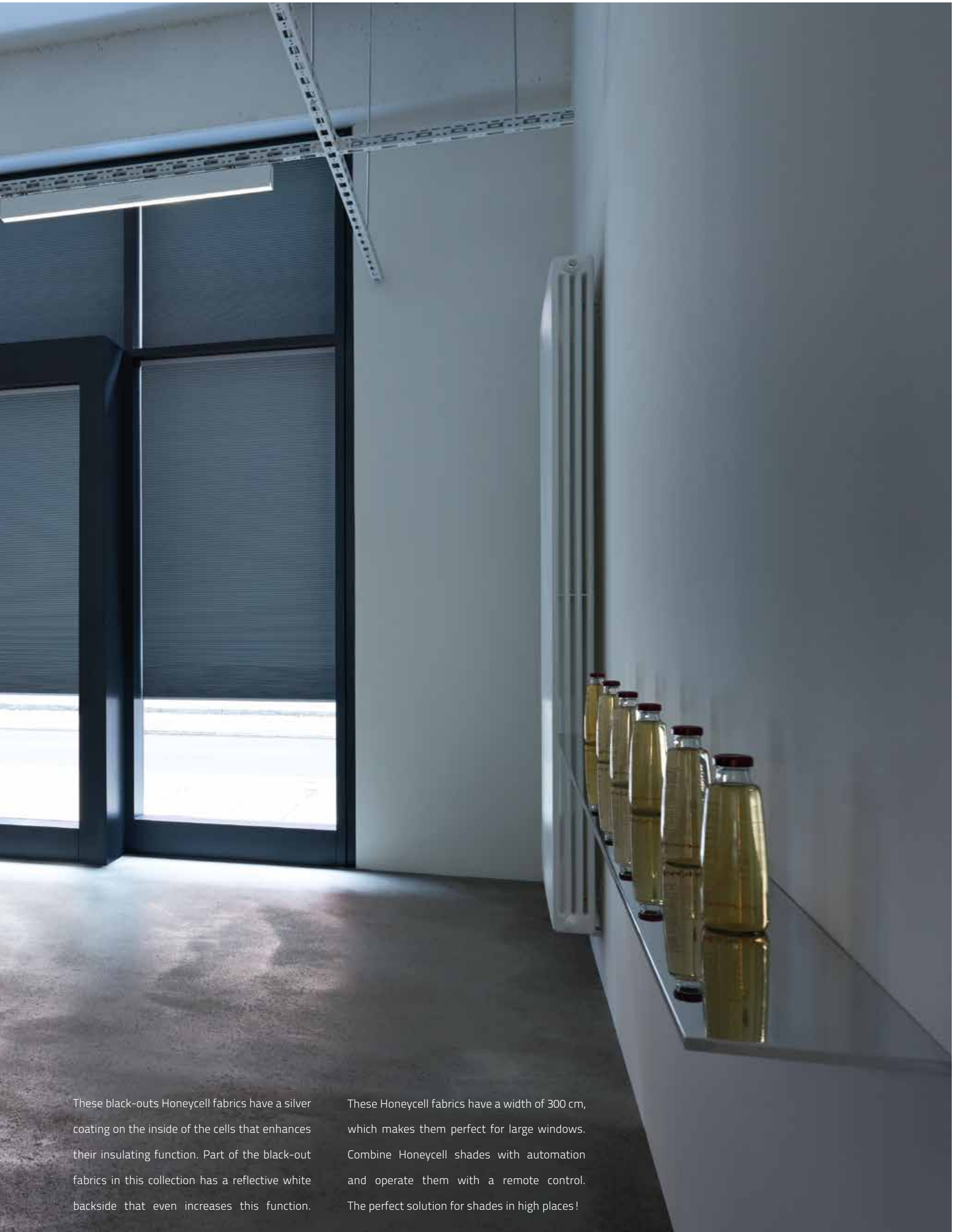


The unique cell structure of Honeycell fabrics has an insulating function that helps to save energy and to dampen noise. Our Honeycell collection offers fabrics in different transparencies that, depending on their sheerness, allow for creating more or less privacy in the room. The horizontal lines of this

25 mm Honeycell blind create a modern effect. Our collection includes soft textile fabrics. Both fabric Hamilton and Oxford have a natural linen texture that offers a sense of tranquility and harmony. The natural feeling is emphasized thanks to the use of tactile fabrics like Hamilton and Oxford.







These black-outs Honeycell fabrics have a silver coating on the inside of the cells that enhances their insulating function. Part of the black-out fabrics in this collection has a reflective white backside that even increases this function.

These Honeycell fabrics have a width of 300 cm, which makes them perfect for large windows. Combine Honeycell shades with automation and operate them with a remote control. The perfect solution for shades in high places!





Apart from plain fabrics with a natural cotton, linen or wool look and feel in soft color tones, our roller blind collection includes stylish, eye-catching prints. The designs in our collection are developed by our own design team and inspired by fashion, architecture, art and

nature. In addition to stylish graphic patterns, the collection also includes subtle micro prints and distinctive organic designs. The extra width of 280 to 300 cm makes these fabrics ideally suited for the contract market.

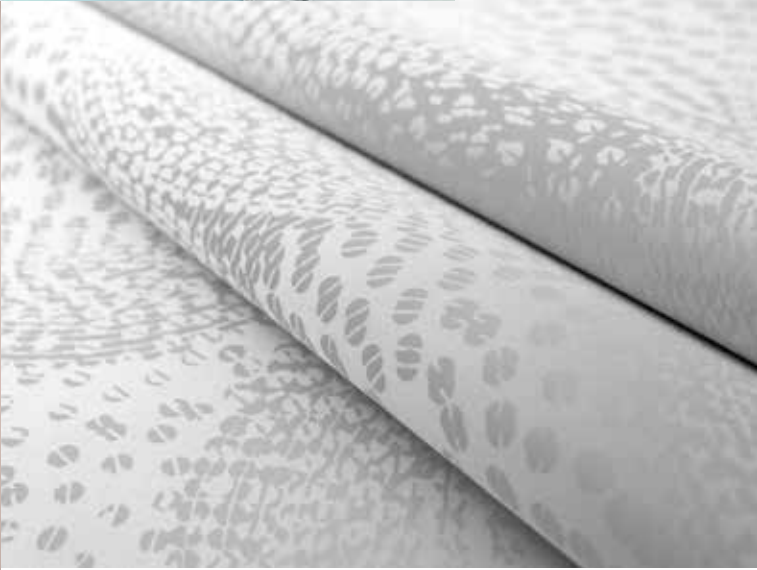
22



DRF-EGINA-0300 CREAM



TSE



RF-SA14439-51 WHITE - 200 CM

SOFT TOUCH



NGRS Recruiting Company HQ

RF-BERLIN-0930 AIR BLUE - 200 CM



Jason Wu



SCR-3005-01 CHALK - 200 / 250 / 300 CM



A tendency in today's market is the use of ever-softer tones and tactile materials. Soft, powdery pastels create a sense of delicacy in the interior, creating an inviting, fresh and light atmosphere. Nude pinks, pale creams and feathery greys soften the hard lines of cold materials often used in modern interiors. The pastel colors in this trend combine well with white, making them even more light and floating. These delicate colors are feminine at heart and make us feel covered and welcome.



METAL SYSTEM



25

DESIGNER OPTION
METAL SYSTEM

Our Absolute 2.0 roller blind system offers the perfect solution for any window situation. Its modular set-up allows for the efficient creation of endless system configurations, from basic to full-option motorized systems and even designer look systems. The components of this revolutionary roller blind system are available in six different metal colors, which allows for creating a total look on the window.



RF-DARWIN-0700 BLUSH - 280 CM

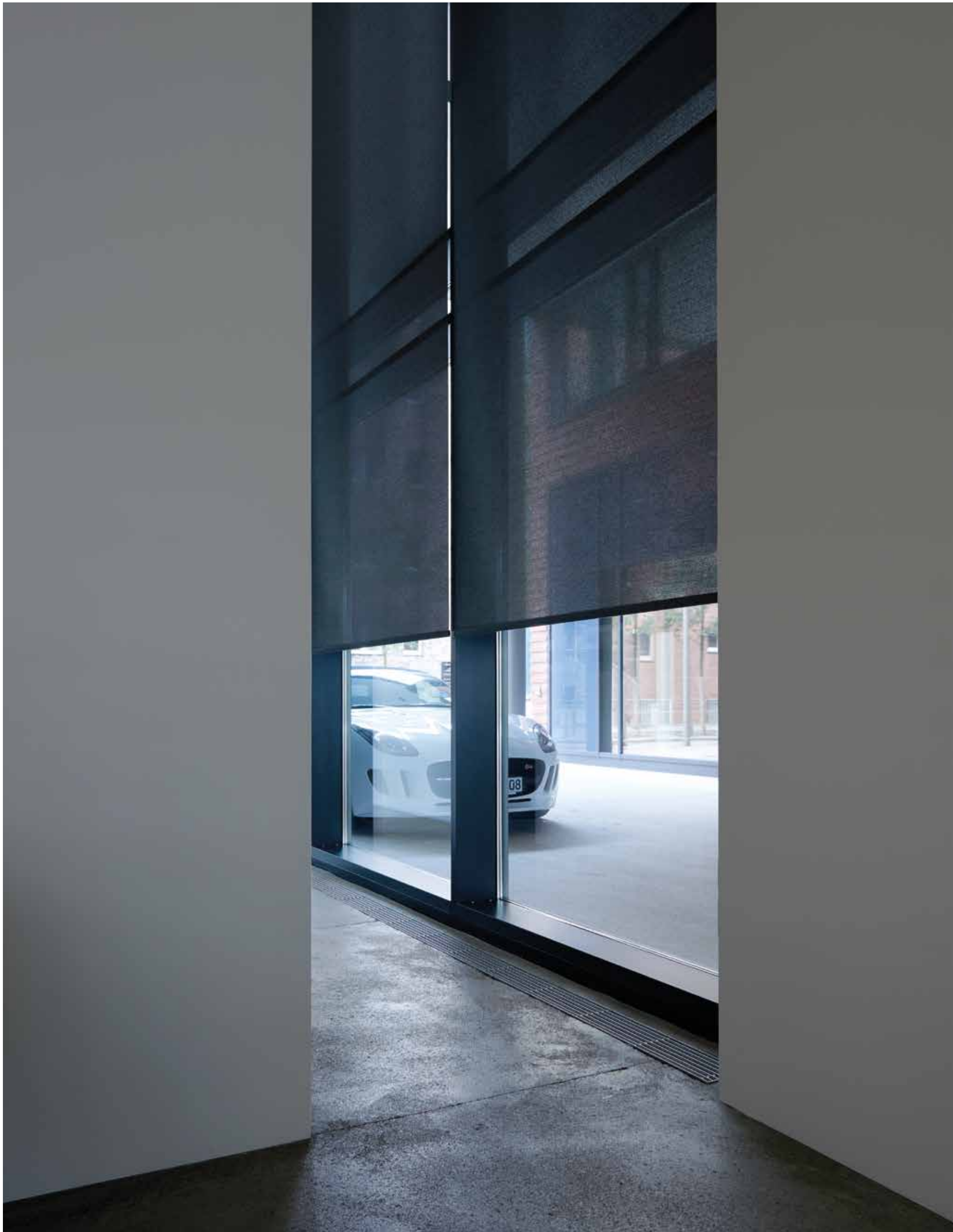


Need inspiration for a refreshing color scheme for your interior? Break up the monotone feeling of all-grey architecture with a roller blind in delicate pastel colors. Roller blind fabric Darwin, here in soft pink, adds vibrancy to the interior. Its natural cotton texture creates a comfortable feeling. This contemporary collection includes black-out varieties with a white backing for sun reflection as well as transparent fabrics. Fabric Darwin has a width of 280 cm and is available in a delicate palette of colors, including natural basics and soft pastels, like mint, saffron and blush.





The graphic shape of these XL pleats really enhances the interior. In a modern environment with a lot of sleek designs and vertical lines, the horizontal lines of XL pleated blinds really pop out. XL Pleat fabric Aretha has a delicate jacquard-woven micro flower design and is available in several stylish transparent colors, including in Trevira CS. Because of their oversized pleats, these 50 mm pleated fabrics are especially well-suited for large windows.





In today's modern interiors a lot of cold materials such as glass, concrete and steel are used. Wool-like fabrics, like flame-retardant roller blind fabrics Richmond and Winchester, are perfect for bringing softness into these interiors. Thanks to their blended wool look, they create a warm and luxurious feel while making the room cuddlier. This mix of cool design and warm softness is a new design approach which is more and more seen in both the residential and the contract market.



CONTRACT DESIGN



33

DESIGNER OPTION
PVC BRACKET BLACK

CONTRACT DESIGN | Apart from tactile Trevira CS fabrics, our collection for the contract market offers a wide array of different screen fabrics that combine excellent technical and functional properties with fast-forward design. Screens are the perfect choice in spaces with large glass facades. Depending on the color, more visual contact with the outside world is retained, while a comfortable indoor climate in terms of light and heat is created. With our unique screen concept (four openness factors, one look) a uniform look can be achieved, while putting in place the perfect functionality on every façade individually.

AUTOMATION | Our automation concept Absolute Control offers motors for all kinds of window covering systems. They allow for creating a central, automatic operation of blinds individually or simultaneously throughout the building.





DESIGNER OPTION
METAL BRACKET NATURAL ALUMINIUM

Surround yourself with light with the pure, bright fabrics in our collection. This super transparent jacquard has a subtle graphic print of clear organic shapes. It is decorative without being loud and ensures a very serene feeling. The organic shapes and white tones combine well with soft greys and pastels. The subtle metallic touches create a rich effect. Discover how hardware can enhance the total look of the blind with systems and accessories in matching colors.





Our Honeycell collection includes innovative designs, colors and various natural textures that really bring atmosphere in the space. The collection offers different transparencies, cell sizes, full-tone and duo-tone fabrics. In addition to 25 and 45 mm single-cell and double-cell varieties, the collection offers a unique 20 mm single-cell variety. With translucent, black-out, flame-retardant and reflective varieties the functional possibilities are endless. Due to their width of 300 cm, they are perfect for large windows.





VF-BERLIN127-6410 PURPLE - 127 MM



Our plain collection for vertical blinds offers different fabric qualities, each available in a huge color palette that ranges from timeless, natural colors to expressive and daring hues. The use of powerful colors in the interior will make the space look lively. Discover the amazing trend colors in plain collections Berlin, München and Paris (Trevira CS) and create an individual statement on the window.





Vertical blinds are perfect for controlling daylight and privacy; a must in today's office for a comfortable meeting. The length and rhythmic repeats of the verticals make the room optically seem higher. The natural linen-look of fabric Brasilia matches well with light wood and other untreated wood varieties. With its warm minimalistic touch, it beautifully harmonies with the architecture which surrounds it.



We hope we have inspired you with this journal and look forward to inspiring you with the next.

colophon

DESIGN Wim Leeftang - Morskjeft Ontwerpers van Visuele Identiteit LOCATION PHOTOGRAPHY Paul Haverkort - Marjo Baas
CONCEPT AND STYLING Annemarieke Spee COLLECTION AND DESIGN Catharina Idema CONTENT Edith Irausquin
PRINT GI Business Promotors

ABSOLUTE ROLLER 2.0

discover the ultimate collection



Create your own designer look for the window with the Absolute roller 2.0 Ultimate system. See how hardware and accessories complete the look of the blind in an interior.

COULISSE

since 1992

COULISSE.COM
DESIGNED IN THE NETHERLANDS