

COULISSE JOURNAL

photography: dusan reljin ■ model: crystal renn ■ RF-BOT/50002-52 orange

# COULISSE

since 1992

3

MARCH  
2015



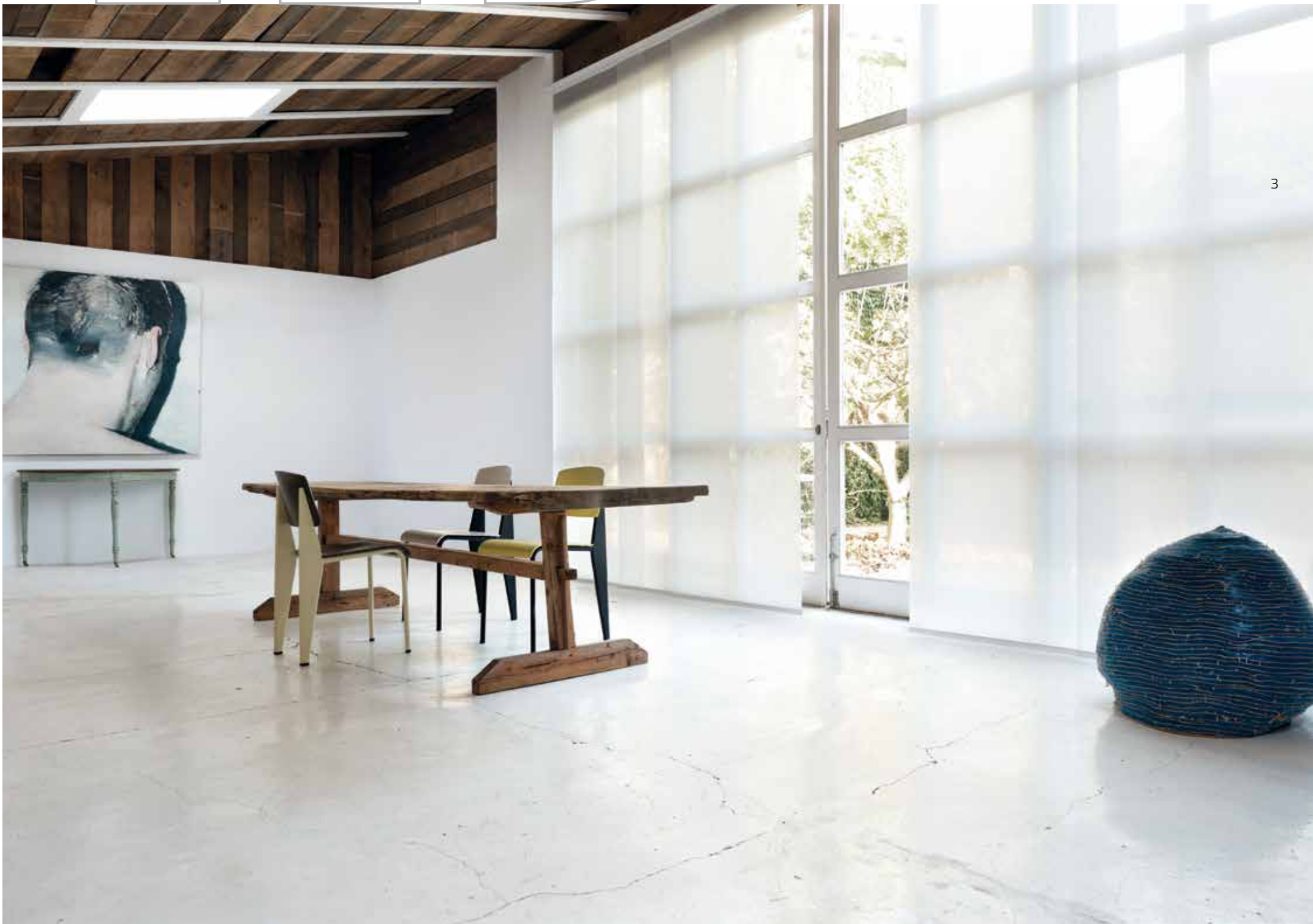




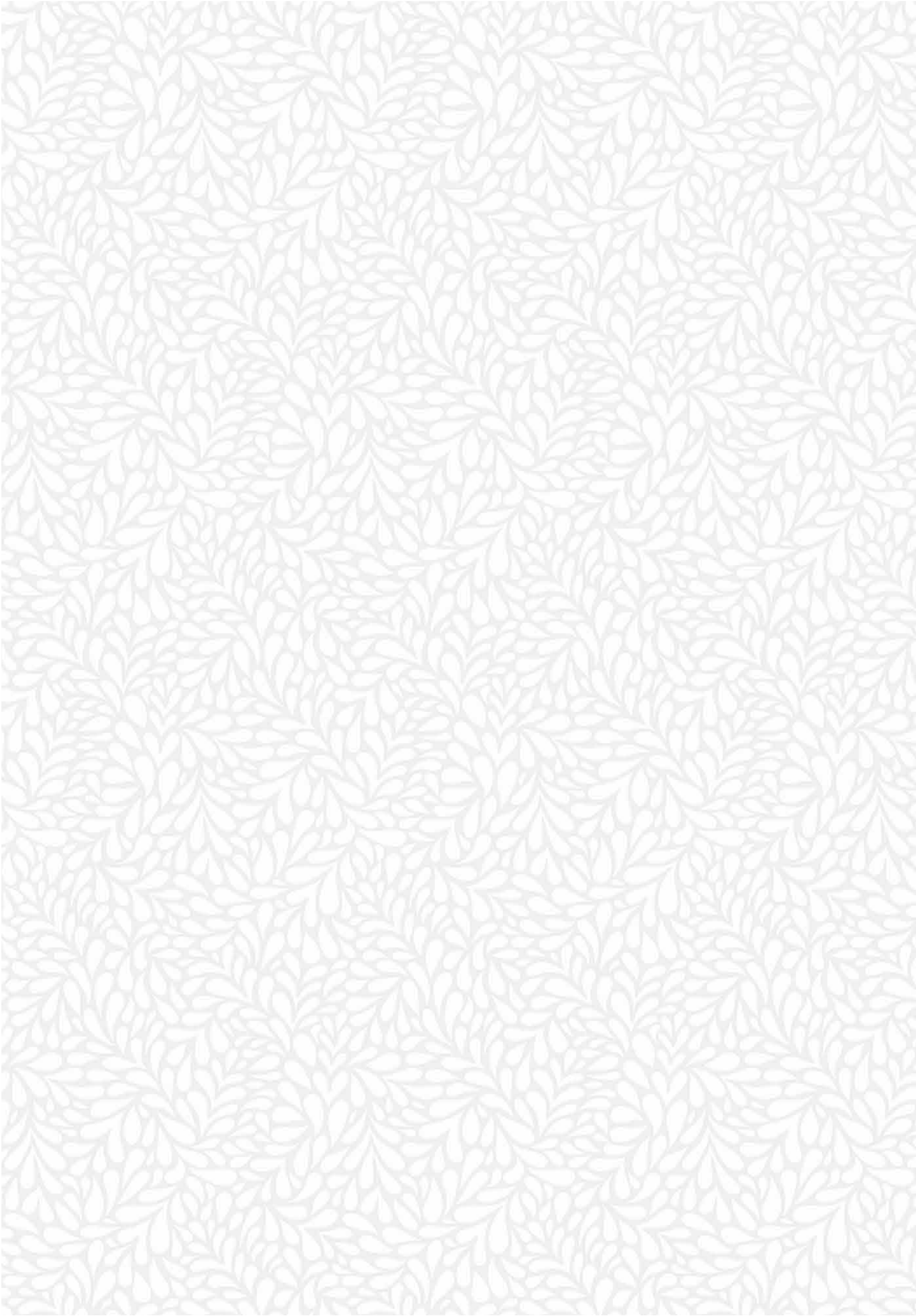
UN

New beginnings. In response to the hectic and dynamic world we live in, we focus on what is essential to us to create a feeling of freshness, lightness and clarity. We leave behind what we do not need and begin with a clean slate. By surrounding us with pure, white hues, we create a sense of calm that allows us to think clearly and to open up to new possibilities and challenges. We look into the world with an open mind and renewed energy.

# TITLED











Crisp white like a new winter's day. The balanced, organic patterns in our new collection for roller and panel blinds, called Untitled, have been worked out in white on white. The fabrics have a minimalistic and serene effect that radiates cleanness and freshness. In the interior they subtly decorate the space. The same patterns are available as a print fabric as well as a jacquard woven fabric.





Architectural lines and shapes of objects in the interior create the image that we see when all is white. Light adds depth and dynamics in this serene, monochrome environment. The use of non-colors makes the design even more important and invites us to explore it.

6

To crash the speed record at that time, the late multitalented and motoring loving architect Carlo Mollino designed this futuristic car in the 1950's. His aim: to create the perfect lines. We photographed the model of this car during our photo-shoot at the Mollino House Museum in Turino.











In the course of this year we will be introducing a new collection of 50 mm pleated blind fabrics. The collection includes pure fabrics with a natural textile feel. The tactility and warmth of the materials give the linear line play of the pleats an elegant, yet easy touch. Over the years our XL Pleat collection has grown out into a comprehensive range that includes functional fabrics, black-outs and Trevira CS, as well as sophisticated decorative fabrics with embroidered patterns, graphic prints and jacquard woven designs.







THIS IS THE FIRST TIME WE ARE  
INTRODUCING AN ALL-EMBRACING  
FABRICS COLLECTION FOR THE  
CONTRACT MARKET. THE RANGE IS  
ALL ABOUT TACTILITY AND WARMTH.  
IT INCLUDES A VARIETY OF MOSTLY  
FLAME-RETARDANT PLAIN FABRICS  
WITH A NATURAL TEXTILE FEEL, LIKE  
WOOL, LINEN AND COTTON. THE THREE-  
DIMENSIONALITY IN THE FABRICS  
BRINGS THE INTERIOR CLOSER TO US.

# Contract

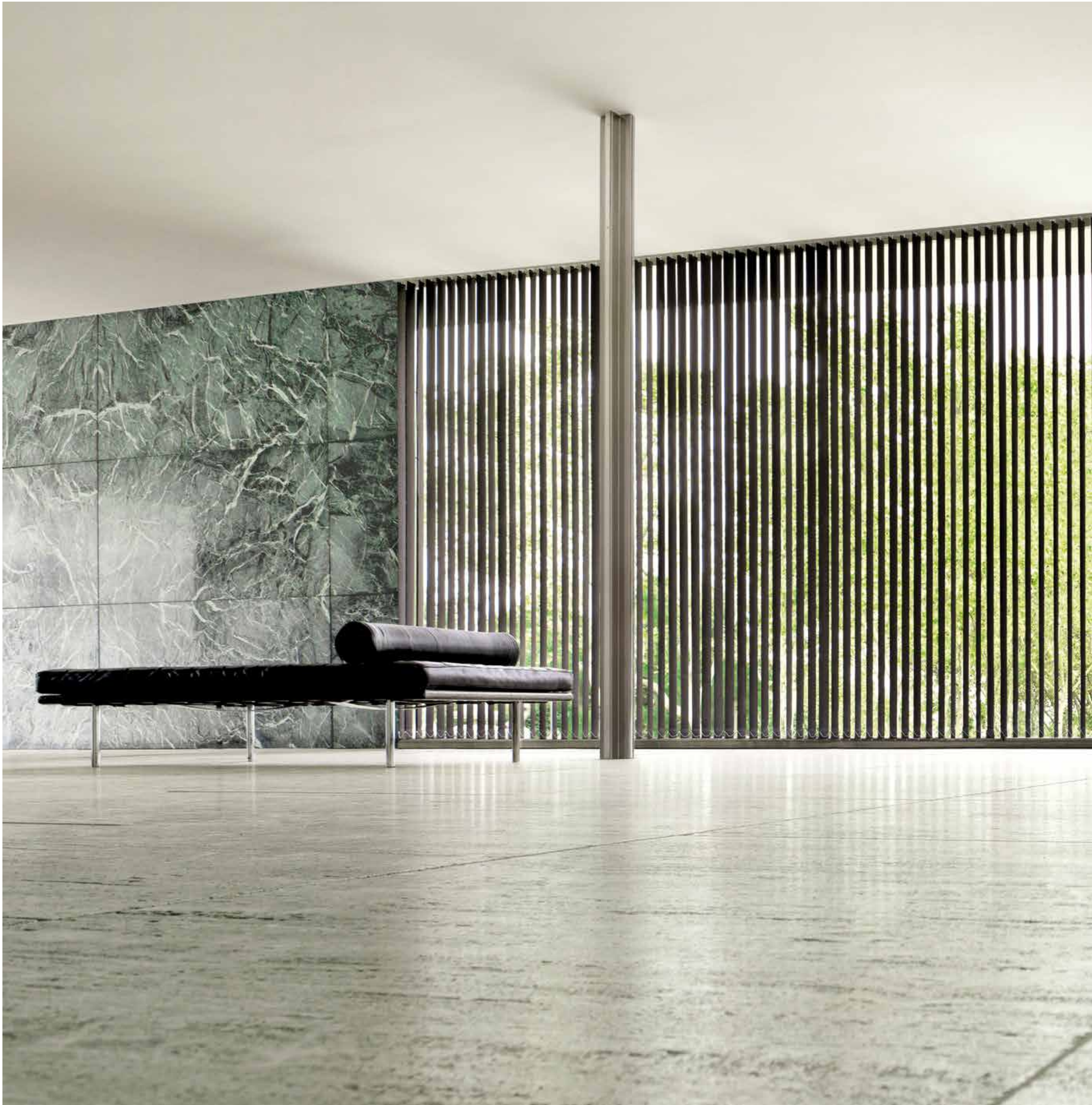
## COLLECTION

‘For the introduction of our new contract collection, we wanted to do a photo-shoot on an iconic architectural location, a place that resonates with architects, designers and interior design lovers. The Barcelona Pavilion is such a place. This masterpiece by Mies van der Rohe demonstrates the power of simplicity, which is exactly what we wanted to express in our new collection. The pictures turned out even more beautiful than I had imagined. We hope they will inspire others in the same way as they inspire us.’



RF-DARWIN-5100 cloud available in a width of 280 cm





The Barcelona Pavilion is the birthplace of modern architecture. Architect and designer Mies van der Rohe (1886–1969) designed it as the German National Pavilion for the Barcelona International Exhibition, held in 1929. In the years following the exhibition, the Pavilion turned into a reference for twentieth-century architecture as well as in the career of Mies van der Rohe himself. It became an object of study as well as an

inspiration for generations of architects and designers. The pavilion, which is built from glass, steel and different kinds of marble, was reconstructed and opened to the public in 1986. Mies van der Rohe's was born in Aachen, Germany. All over the world, he is considered to be the creator of modern architecture and he is one of the fathers of the Bauhaus style. Clear lines, simplicity and geometrical precision define his designs. The

sense of minimalism can be traced back to the use of pure colors and modern frameworks. Not only in his architectural designs, but also in the furniture pieces he designed, Mies van der Rohe practices the art of leaving out, or as he called it 'Less is More'. His furniture pieces include the Barcelona chair and table, the Brno chair and the Tugendhat chair, popular classics in today's interior design.





Take a peak behind the scenes of our photo-shoot in Barcelona. Max Firchau and Moritz Freudenberg cruised the pavilion on their skateboards for the footage for this short movie.



# ABSOLUTE ROLLER 2.0

EXTREMELY MODULAR

Meet the second generation of our Absolute roller blind concept. Its new set-up and design are based on an inventory of the globally varying needs and requirements in the roller blind market. The perfected modularity allows for creating endless configurations with a minimal number of components. The systems are easier to assemble, install and use and available in system sizes: XS, S, M and L. With basic and full-option systems, different models and styles, Absolute Roller 2.0 offers the perfect solution for every window situation.



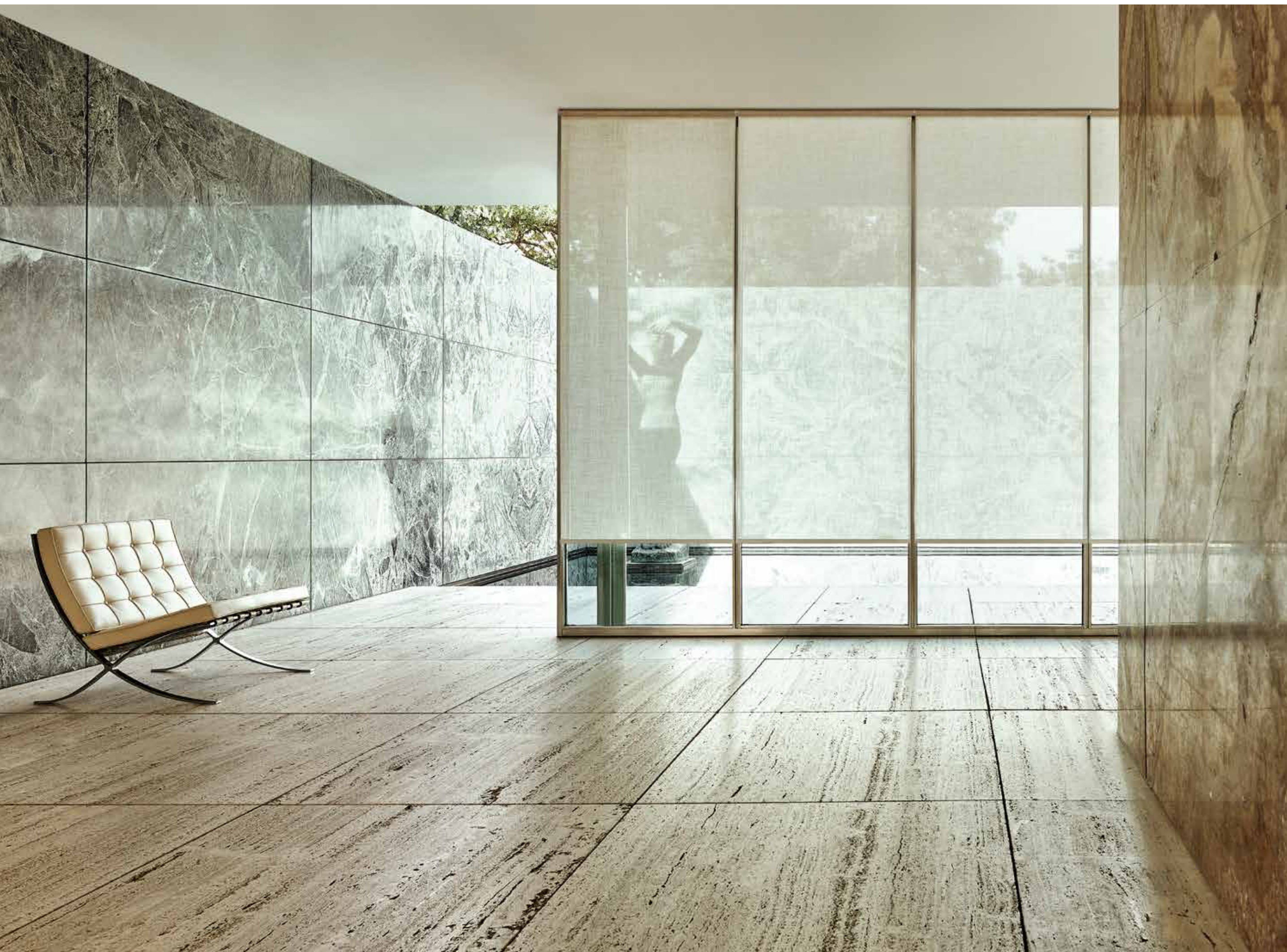




Scan the QR-code and experience how easy it is for you to extend your offering in roller blinds with more sizes, options and styles with only a minimum amount of components. When it comes to roller blinds, Absolute Roller 2.0 is all you need.







The use of natural materials makes us feel like the interior is closer to us, more around us. Soft materials like wool and cotton create a warm feeling and inject emotion into the interior. The photographs we took for our new contract collection at the Barcelona Pavilion demonstrate this clearly. The fabrics bring warmth and a comfortable ease to this architectural environment with its geometrical lines and smooth surfaces, and make it more intimate. Their natural texture softens the hard materials. The pure colors we chose for the photo-shoot bring out the beauty of the amazing marble walls and floors in the Pavilion even more.





Flame-retardant fabrics Winchester and Richmond are two of the eye catchers in our contract collection. Both fabrics have a warm wool look. Although they have been coated, they still have that typical natural softness.





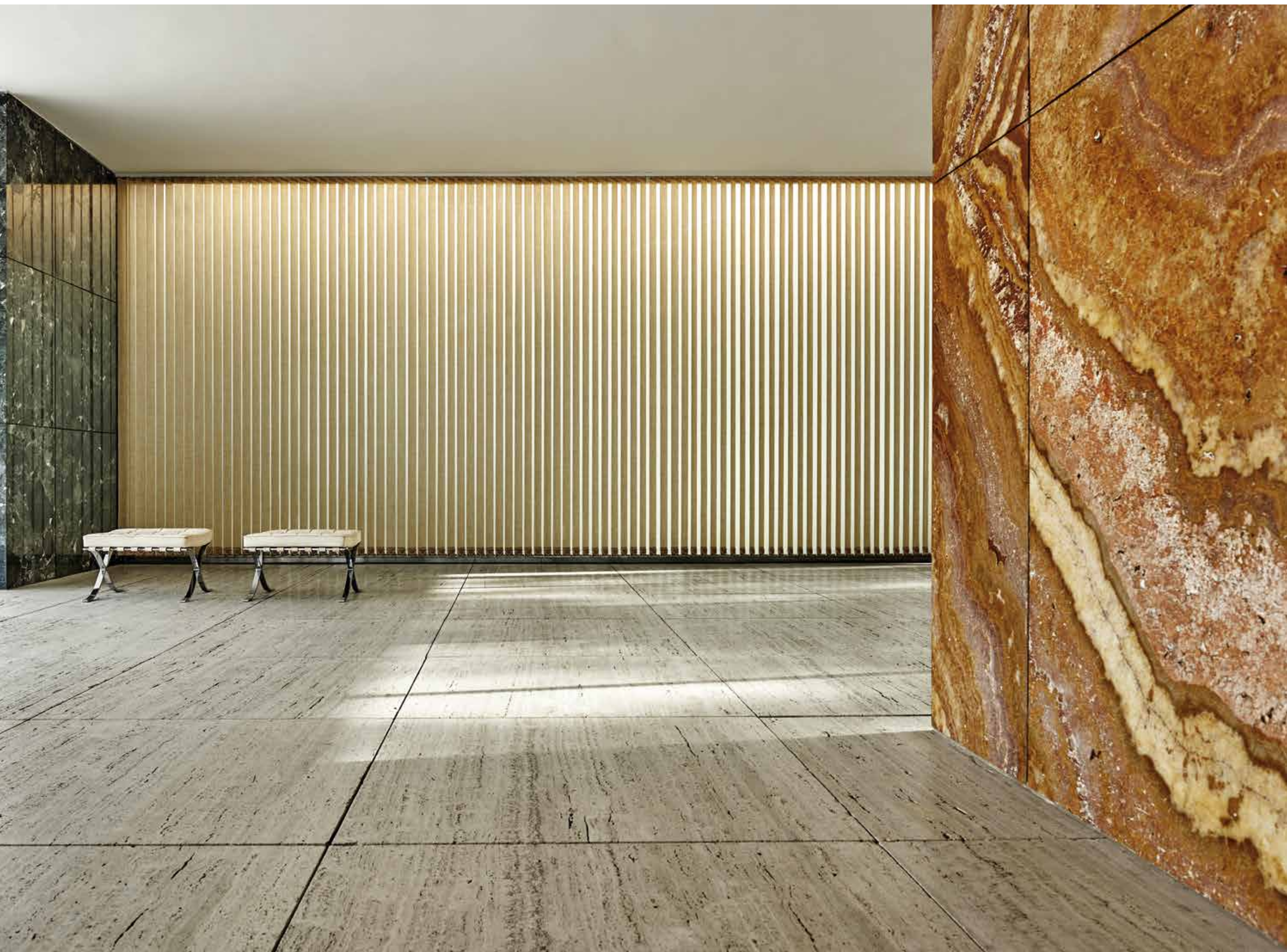


The Barcelona chair. A timeless icon of modern design by Mies van der Rohe. He designed the chair especially for the Pavilion. It consists of a leather upholstered metallic profile. Like so many others in the world, we simply love this chair.





Several fabrics in our new contact collection are also available for vertical blinds. The soft textures and warmth of the fabrics elevate the blind from a pure functional product to a stylish centerpiece in the interior.



*‘I don’t want to be  
interesting. I want to  
be good’*

Ludwig Mies van der Rohe (1886-1969)





Paris was our first ever collection suited for the contract market. This Trevira CS fabric now forms the base of our new contract collection. In line with the pure feeling of this collection, we added seven natural colors to the Paris range, all available in a width of 300 cm.

For this year's photography our creative team travelled to several inspiring locations in Spain, including the Barcelona Pavilion. The pictures allow us, as well as our customers, to share the beauty of window décor.



DESIGN Wim Leeftang - Morskjeft Ontwerpers van Visuele Identiteit LOCATION PHOTOGRAPHY Paul Haverkort - Marjo Baas PHOTOGRAPHY CONCEPT AND PRODUCTION Annemarieke Spee COLLECTION AND DESIGN Catharina Idema CONTENT Ellen van Dijk - BrandForceOne B.V. PRINT GI Business Promotors













Amazing. That is the word that came to mind when we visited the Mollino house in Turin. This impressive apartment, one of the former houses of the Italian designer Carlo Mollino (1905 - 1973), was one of the photo-shoot locations for this journal. It is currently in use as a museum for his work. Carlo Mollino was a not so ordinary artist with many interests. He worked as an architect, acrobatic pilot, skier, photographer, interior designer, writer and car designer and he had a passion for women, speed and the occult. His credo 'Everything is permissible as long it is fantastic' is reflected throughout his body of work, which involves architecture, furniture, art and car models. His legacy still inspires many people all over the world. Our photo-shoot at his apartment, which is located in a picturesque two-story 18th century villa on the Po River, made an unforgettable impression on us.

The apartment, one of his three houses in Turin, is a display of his unrivalled creativity and his love for beauty. Carlo Mollino never really lived in it, but decorated it as a home for his afterlife, a fantasy world in which he finds himself surrounded with beauty. The authentic and amazingly stylish mix of modern design, ancient relics, decorative objects and patterns was captivating. Each part of the apartment forms a pretty feast for the eye with new surprises and details. Old and new come together in a renewed feeling, creating a new world that we did not know before. A world as intriguing as it is appealing. Photographing our products here brought new dimensions to our products as well as to the interior itself. Like the antique Italian textile books in our archives, the work of Carlo Mollino will continue to inspire us in our work.







*‘Everything is  
permissible  
as long as  
it is fantastic’*

Carlo Mollino (1905-1973)

RF-WINCHESTER-0200 cream - trevira cs - in 300 cm  
VF-PR-ELLA-0300 bronze - micro collection - available in 89 and 127 mm as well as in 240 cm





Discover the unexpected generosity and fantastic appeal of simple plain fabrics. With their modesty they leave the spotlight to the light and the interior itself. Without being loud, their effect on the interior is surprisingly powerful.











photography: dusan reljin ■ model: crystal renn

The new classics. For our new Heritage collection we sought inspiration in the exquisite colors, patterns and textures presented in the antique Italian textile books in our archives. We interpreted them anew and made them of the now, while maintaining their classic charm and richness. We chose deep, classic colors, such as brown, dark red, gold and copper tones, and used metallic yarns in parts of the collection for a slightly dramatic effect. The jacquards have a luxurious, baroque feeling that will instantly elevate the interior. Who better to bring out the glamour of this collection than Dusan Reljin, New York



based fashion photographer who has worked for fashion brands like Gucci and Helmut Lang, and fashion magazines like Vogue and V Magazine. For our Heritage collection, Reljin shot a series of pictures with our jacquards and world famous model Crystal Renn, who has modeled for Chanel, Dolce and Gabbana and many other exclusive fashion brands. The combination of model and our fabrics as the decor has resulted in pictures of classic allure. The light makes the beauty of the fabrics really pop off the screen and brings out the delicate weaving structure of the material.















Their exclusive look combined with a width of 280 cm makes the jacquards in our new Heritage collection especially suitable for the application in luxury hotels. A dim-out coating makes sure the design is also visible during the day and that darkness can be created in the room.



Pantone announced PANTONE 18-1438 Marsala, a naturally robust and earthy wine red, as the color of the year 2015. According to Pantone this hearty, yet stylish tone is universally appealing and translates easily to fashion, home furnishings and interiors.

















As a response to the busy and hectic life outside, we create an inspiring garden inside our homes. We bring the richness of nature indoors with colorful floral patterns and natural shapes. Designs are imaginative, organic or abstract. Colors cheerful and bright or more pastel. The trend is individual, rather than feminine or masculine and timeless as nature itself.

# botanic















The roller and panel blind fabrics in our Botanic collection are refreshing, playful yet subtle. The collection includes print fabrics and jacquards with delicate all-over flower patterns and organic designs. Eye catcher in the collection is a jacquard with print.















42





Create a fresh, organic feeling in the home with natural patterns in energetic green hues. Always beautiful when combined with crispy white. The combination brings balance in the interior and makes us feel clean, healthy and happy.



DESIGN AND TECHNOLOGY

COULISSE

since 1992

COULISSE.COM  
DESIGNED IN THE NETHERLANDS

COULISSE CONTRACT COLLECTION @MIES VAN DER ROHE PAVILION BARCELONA