

# LAYERS

Journal  
03

COULISSE | INK  
since 1992



A window to a good life

# LAYERS

Journal  
03

COULISSE | INK  
SINCE 1992

DIRECTOR OF INK  
Jenfilia Suwandrei Arifin

EDITOR  
Simpul Group

ART DIRECTOR  
Simpul Group

WORDS  
Simpul Group

ON THE COVER  
Partner with Laudem Deo  
Designed by GA Design  
Photo by Raymond Eliezer



LAYERS by INK is a journal published triannually, serving the latest observations and trends in the world of design.

CONTACT US  
Phone | (+62) 21 29376430  
(+62) 21 293643431  
Whatsapp | (+62) 812 8383 0448

info@coulisse.co.id  
www.coulisse.co.id  
@coulisse\_ink

Showroom  
Jl. Ahmad Dahlan No. 22,  
Kebayoran Baru, Jakarta Selatan  
12220, Indonesia

Warehouse  
Jl. Pangkalan 6, Gang. Masjid  
No. 38A, RT.002/RW.002,  
Ciketing Udik, Kec. Bantar Gebang, Kota  
Bekasi, Jawa Barat 17153

## Contents

- 4 Editors Letter
- 5 About  
Coulisse & INK
- 7 On Radar  
Le Château Living
- 8 The Good Earth  
Sustainable Choices  
for a Greener Home
- 10 Special Report:  
Uncover  
The Future of a Home
- 20 The Figure  
Jessica Halim  
Rinaldy Yunardi  
Yolodi+Maria Architects
- 34 The Frame  
An Industrial Oasis  
Sanctuary of Luxury  
Refined Urban Dwelling
- 48 The Collection  
Smart & Functional  
Beauty & Well Being  
Impact on The Planet
- 56 The View  
Elevate With Luxury  
The Future of Smart Homes

## Editor's Letter

A home should embody its owner's strong values, and at **Coulisse INK**, we wholeheartedly believe in this principle. Our roller blinds are crafted with care from sustainable fabrics that not only enhance the aesthetic of any space but also embody a commitment to responsible living. With our extensive collection of roller blinds, we invite you to find joy in every choice and elevate the interior style with elegance. Living beautifully, comfortably, and responsibly can coexist in perfect harmony.

Dive into a fresh perspective on what it means to live well in today's world. Luxury is no longer just about opulence; it's about embracing a stylish and eco-conscious lifestyle. Smart living is also at the forefront of this new luxury. Imagine a home that effortlessly adapts to your lifestyle, making everyday moments precious, meaningful, and warm. With our innovative technologies, controlling light and privacy is a breeze, giving you more time to focus on what matters.

At the series of design enthusiast events supported by **Coulisse INK**, you'll discover inspiring ideas and stories that showcase how the industry is reimagining the purpose of homes and lifestyles. We offer a vision of elegant design trends for sustainable living, helping you create a space that feels both modern and mindful. With this perfect balance, Coulisse is the ideal choice to begin your journey.

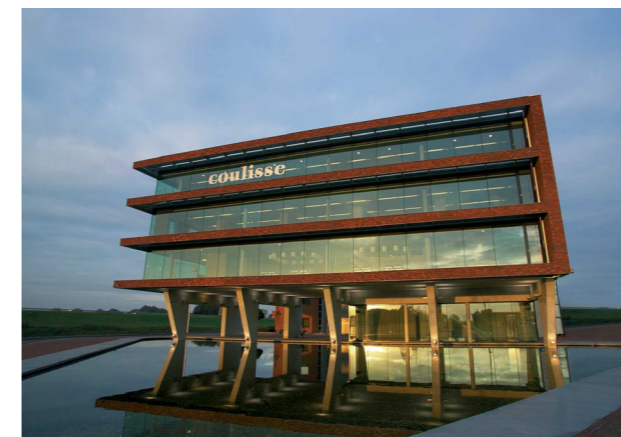
In this **LAYERS** end-of-year edition, let's embrace this exciting journey together. Here's to redefining luxury—one eco-friendly choice at a time as we set our New Year's resolutions.

**Jenfilia Suwandrei Arifin**  
*Director of INK*

## About Coulisse

Windows frame our vision of the world from the safety of the indoors. They offer us the opportunity to observe what is happening outside, and shape just how we perceive things. The look and design of a window is as important as the view it holds, changing our impression of what we see through the ornaments, the shape of the windows, how much natural light they allow, and more.

Coulisse itself has been creating inspired window coverings as far back as 1992. We are known for our design approach, which incorporates the objective of turning windows into parts of a home that manage to offer comfort as well as style and personalization. We use innovative systems and smart technology to develop forward-thinking collections of products to produce indoor spaces that are comfortable, safe, energy-efficient, and an exceptional expression of yourself and your tastes. All of our products are developed by our Marketing and Design Studio as well as our Engineering department in Enter, the Netherlands.

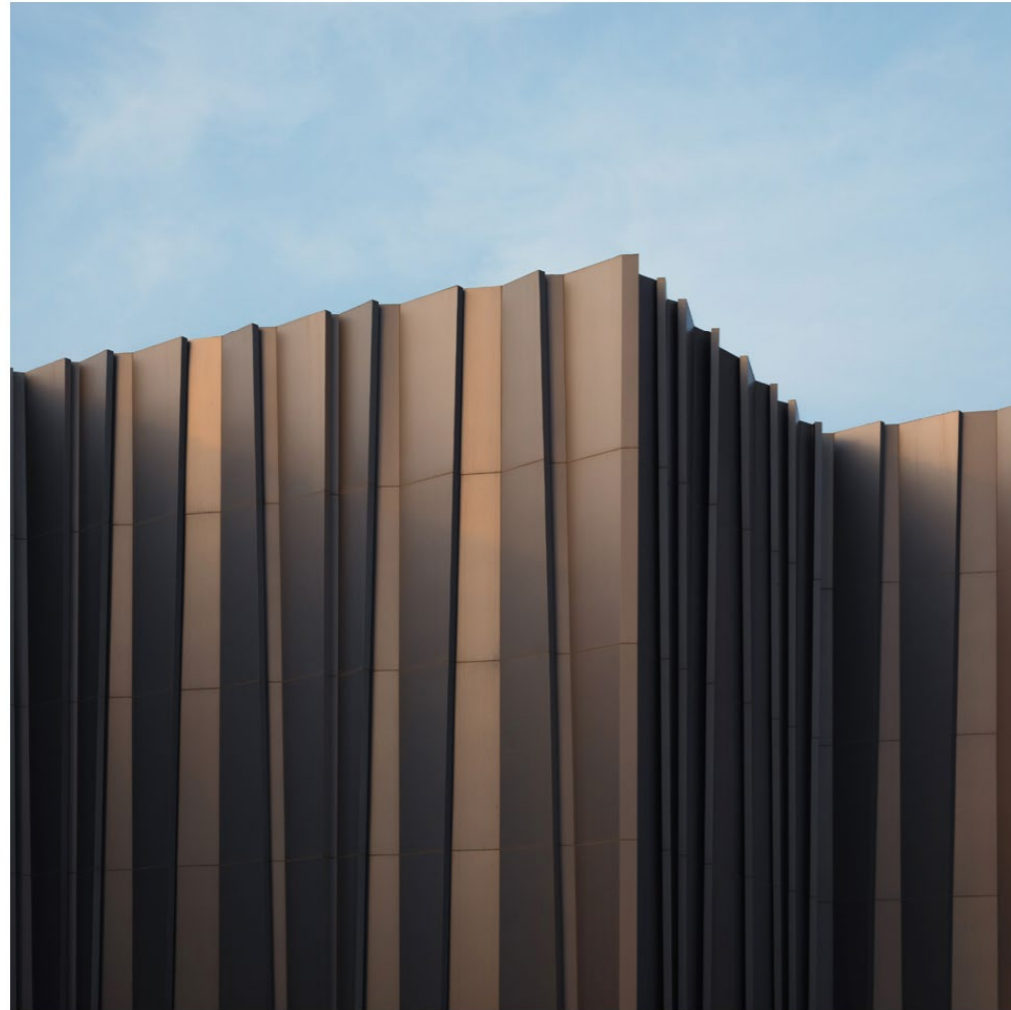


## About INK

Indonesia has a rich design culture, and an increasing taste for items that go beyond function and offer beauty and elegance. More and more of our people look for items that can give a unique identity for their home without compromising on quality or use. Specially designed items by esteemed brands and designers are becoming more commonplace, for every aspect of a home, and windows are an essential part of this.

Imaji Nata Kirana (INK) has been Coulisse's official partner since 2016, bringing cutting edge and creatively rich European window coverings to Indonesia. By working together, we introduce people to a world of inspiring window coverings, offering the possibilities in creating a personal space that stimulates well-being, productivity and comfort. Our work and our approach is inspired by multiple factors, including nature, design, fashion, and architecture. We are the ideal solution for any window covering needs, offering innovative systems for both residential and project markets.





## On Radar Le Château Living

### MINIMALIST COMFORT

In line with Coulisse INK's products that offer technological innovation, the SensoWash® bidet by Duravit also takes center stage in refined luxury. Featuring a minimalist design, it combines comfort with an enhanced bathroom experience, perfectly suited for modern living. A dominant white palette showcases a visually pristine and sanitary aesthetic, versatile enough for any bathroom arrangement.

### ELEVATED DURABILITY

Combining sophisticated design with durability, the Driftex™ Electronic Lavatory Faucet with Soap Dispenser from the Architectural™ Design series is ideal for high-traffic, vandal-resistant areas. It features innovative Proximity® Sensing Technology for hands-free operation. Just as Coulisse INK's values elevate spaces with high-quality window coverings, Le Château Living offers this faucet to enhance both functionality and the user experience.



## The Good Earth



## Sustainable Choices for a Greener Home

Words RIRI WAROKKA

In line with the growing sustainable movement, Coulisse is committed to minimizing our ecological footprint. We prioritize thoughtfully crafted products that transcend trends, choosing enduring quality over fast fashion. Our EcoLuxury collection features items made from recycled materials, produced with care, or both, each proudly bearing the label. This collection is built on four core pillars: Recycled Yarns, Eco Production, Oeko-Tex Certified, FSC (Forest Management Certificate) Certified Paper, proving that elegance and environmental responsibility can go hand in hand.

### PRATO Plain Recycled

Building on the success of our Trevira CS collections, we proudly introduce the Prato collection—our bestselling Paris fabrics reimaged with recycled yarns. While maintaining the same modern aesthetic, Prato fabrics are non-flame-retardant and available in a 300cm width.



### SALAMANCA Plain Recycled

Inspired by the bestselling Salvador collection, the Salamanca collection offers similar quality and aesthetic with a linen-like texture, crafted from recycled yarns. These non-flame retardant, transparent fabrics exude modern sophistication. Available in a 280cm width.

### VERSAILLE Texture Recycled

Recycled yarns in diverse colors and textures give the Versailles collection its remarkable variety and timeless elegance, echoing the refined beauty of couture tweed. Featuring classic whites, off-whites, and dynamic two-tone hues, this collection is available in a 280cm width.

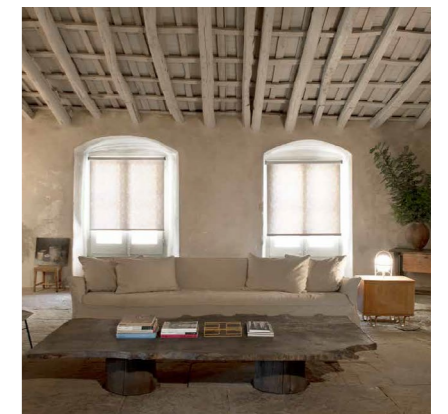


### MARSEILLE Texture Recycled

Available in essential colors and a 280cm width, with a 25m roll length, this collection draws inspiration from woolen *bouclé* textures found in both fashion and interior design. Crafted with light-filtering *bouclé* yarns, these fabrics offer a luxurious look and feel, adding a sophisticated allure to any space.

### TIBET Nature

A woven yarn delicately beautifies the all-white combination with subtle yet modern colourways such as beige and grey. The Tibet collection indicates a natural look emphasizing the light filtering for sunlight, making any room feel warm. Available in width of 240cm.



# UNCOVER THE FUTURE OF A HOME

Step into the rooms where inspiration meets versatility at The Colours of Indonesia (TCOI) 2024 exhibition with Coulisse INK. Embracing elegant interiors with the perfect addition of smart living solutions for the "Summer Home", all unified by modern and functional design.

UNCOVER THE FUTURE OF A HOME

# The Satsuma Pantry

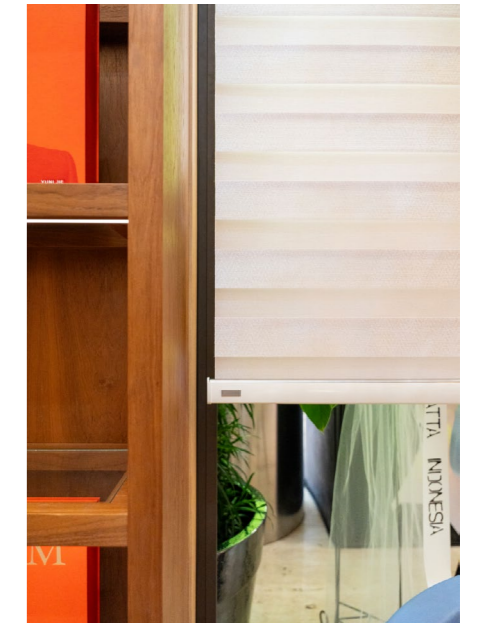
by Yuni Jie

A soft hint of Satsuma Orange peeks through the space, infusing the room with warmth and freshness. Yuni Jie, the visionary behind this design, has created an open kitchen and dining area that feels spacious and serene, perfect for a summer retreat. Light, airy, and elegantly minimal, every detail in this space has been thoughtfully curated to evoke a sense of novelty and harmony.



The room's most captivating feature, however, lies in its connection to the outdoor area, made possible by a large window positioned centrally. This window serves as both a focal point and a bridge between the Japanese-inspired dining area and the lively Italian festivity of the open kitchen. It would envelop the room with natural light, creating a seamless flow between the two distinct design influences.

The window is elegantly framed by Coulisse INK roller blinds, which seamlessly combine style and function. Featuring Honeycomb fabric and integrated with Apple HomePod technology, these blinds display a refined striped pattern in a warm beige palette. They provide privacy and light control, allowing the room to be bathed in soft, filtered light that enhances the serene, warm-inspired atmosphere.



In addition to the window, other design elements—such as the custom wooden cabinet that doubles as a bookshelf and wall feature, and the subtle orange tree wallpaper marking the kitchen area—complement the theme of summer harmony. Together, they create a space that feels elevated and intimate.

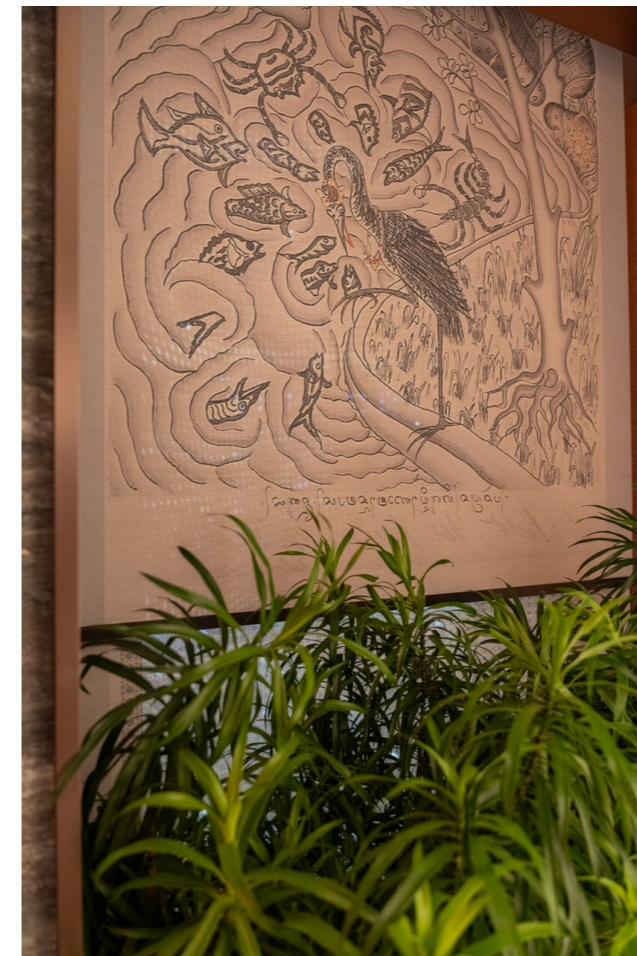


UNCOVER THE FUTURE OF A HOME

# Sunset at Batujimbar

## Bathroom

### by Sammy Hendramianto



A soothing hue of sunset, where warm orange tones initiate a calming sensation, inspires the entire ambiance of this cutting-edge bathroom. The space seamlessly blends smooth translations of texture, an artfully crafted sanctuary to offer an experience that elevates comfort and functionality, while reflecting a refined timeless design.

The tinted orange glass, which plays a role as a divider—between the bathtub and other areas—and a striking design element, casts a captivating reflection that adds a dramatic touch to the bathroom's marble-dominated surfaces. A perfect embodiment of the vision captured in the title: Sunset at Batujimbar, expressing the shades of a sunset, an inspiration that connects natural beauty.

To enhance the connection between the outdoors and the interior, a large window frames the bathtub view, allowing the beauty of nature to flow seamlessly into the space. A Coulisse INK roller blind filters the natural light, subtly stabilizing the sunset's mood and creating a majestic ambiance, even within the confines of the room. A sheer light brown fabric softens the vibrant color palette, intertwining effortlessly with the room's artistic touch.

Integrating vibrant greenery into the room is beautifully accentuated through indoor plants that complement the overall atmosphere inspired by the tropical charm of Batujimbar, Bali. The mastermind behind every textured detail is Sammy Hendramianto, whose meticulously design an artsy bathroom.



UNCOVER THE FUTURE OF A HOME

# Seijaku

## Suite Bedroom

### by Joke Roos

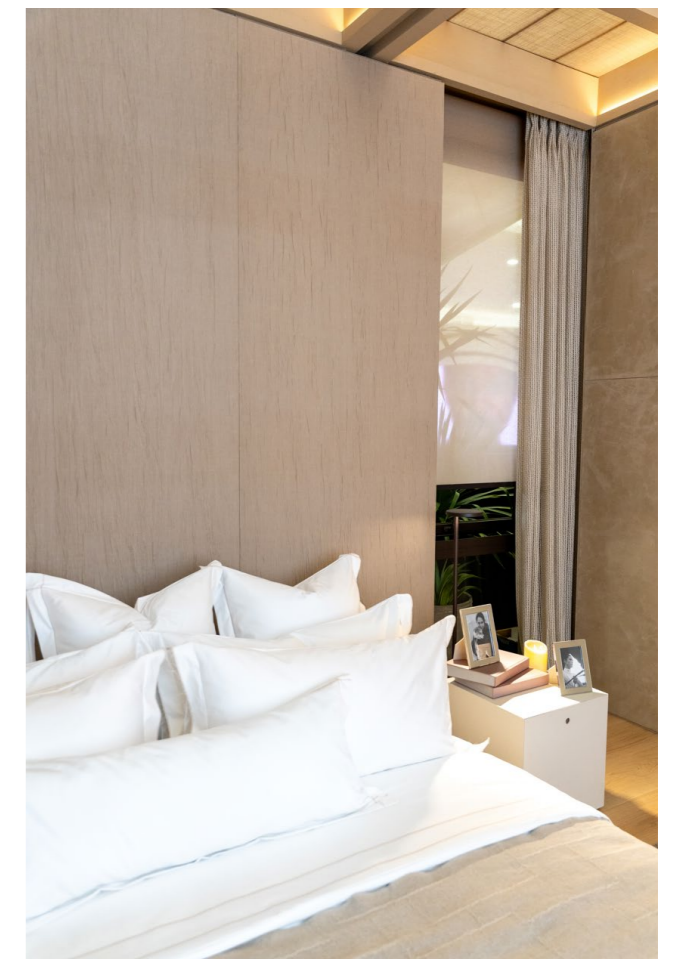
Imagine a serene bedroom, designed with a monochromatic color palette that invites stillness and tranquility. This vision, brought to life by Joke Roos, is one of seamless flow, where every detail works in harmony to create a peaceful, cohesive ambiance. Each element is carefully balanced, never competing, but instead blending together as one—one shade, one energy, one perfect unity.

Named Seijaku, a Japanese word meaning tranquility, energized calm, stillness, and solitude, this room captures the essence of minimalist design. Every aspect fosters a deep, intuitive connection with nature, crafting a space that feels serene yet thoughtfully curated by the renowned interior designer and co-owner of Studio Air Putih. The quiet beauty of the room invites reflection and peace, offering a sense of balance that resonates with the spirit of its name.



The room's close-to-nature atmosphere is further amplified by the Coulisse INK roller blinds, elegantly framed behind the bed. In perfect harmony with the room's natural, light-filled color scheme, the Buff-toned blinds add a refined yet subtle touch. The motorized system, effortlessly controlled via Apple HomePod, elevates the room's quiet luxury, blending cutting-edge technology with timeless tranquility.

Not only do the Coulisse fabrics grace the windows, but they also extend gracefully to the ceiling. The soft, pale brown Mocca hue enhances the airy, luminous ambiance, grounding the space while simultaneously uplifting it. This seamless integration of materials creates a sense of lightness and harmony, where every element feels both rooted and elevated, together forming a truly tranquil well-being.



UNCOVER THE SUMMER HOME

# Antrum

## Spa Room

by Vivianne Faye



A narrow pathway begins our journey, perfectly designed to heighten a sense of anticipation and mystery, much like an adventure through the winding corridors of a cave. As planned, the end of the pathway opens up to a spacious spa room that showcases a versatile blend of textures, combining fabrics and rock-like walls in an artful interplay, masterfully created by Vivianne Faye, a renowned interior designer known for her expertise in texture experiences.

The organic, irregular shape of the floorplan inspired Vivianne Faye to recreate a Salt Cave, drawing on the trending holistic approach. With a sensory experience that engages all five senses, this spa room, named Antrum, captures the essence of a serene retreat in Sardinia, Italy. It invites tired souls to relax and immerse themselves in a peaceful wave of well-being.



A window overlooks the spa's massage area covered by a beige sheer fabric from the bespoke design from the Coulisse INK collection, this spa room elegantly embraces the interplay of the five senses, inviting each to relax while maintaining a subtle connection to the outside world. The delicate translucence weave of the Sand shade fabric allows natural light to filter through softly, casting a gentle glow that enhances the serene ambiance.

At the ceiling, a playful, artistic element mimics the movement of waves, beautifully complementing the blue-hued walls that capture the essence of the sea. The ivory white tones, arranged in layers and ripples, elevate the visual experience, adding depth and flow to the space while further engaging the sense of sight. This refined balance of privacy and openness creates a sanctuary where people can indulge in a sensory escape, yet remain subtly attuned to the surrounding environment.

# The Figure

Rooted in Indonesian culture, this edition highlights three influential figures shaping a better future. Jessica Halim promotes eco-conscious practices, Rinaldy Yunardi creates fashion inspired by Indonesian culture, and Yolodi+Maria Architects designs structures that harmonize with people and their environment.

As a designer, Jessica Halim is always at the forefront of sustainability and eco-friendliness. As a co-founder of Jed Creative, she works in many mediums of design ranging from branding to packaging. Her passion for sustainability also led her to establish demibumi, a brand that seeks to create “green” products and educate people. Let’s get to know her.

Words ADIL AKBAR

Photo DOC. JESSICA HALIM, DEMIBUMI

The Figure

# Jessica Halim



**Q: How did demibumi come to be?**

At school that was never any education on waste in the curriculum, there's science or natural science. But we interact with waste everyday and have never been given a solution as to how we can deal with waste everyday, what that looks like.

**Q: What are you trying to convey through your work?**

Well, it's about giving time to the next generation. I feel that older people have more power compared to children, they have the ability to make change. I realized this because of my kids. When I told them Indonesia will sink in 27 years, they used logic. My oldest cried as she said "Mama, I'll drown at 27." On the other hand, we older people think too much and make things complex. My youngest, three and a half years old, simply said "just fix it."

**Q: What role does nature play in our lives and how do your designs answer that?**

Everything we use comes from nature, be it oil or shampoo. Many people do not realize that they are using palm oil, which has close ties to deforestation, but people often don't think that far when buying products. For example, I went to an elephant conservation in Tangkahan in Sumatra, and everything was palm over there. Everyone there was forced to work in the palm oil industry, even from previous generations, making it difficult to switch. When you go there and listen to their stories, you realize the damage you have on nature, our overly consumptive nature which needs to be reduced.



"When people buy products, they are prioritizing practicality and are not conscious of the waste produced."

**Q: When you hear the word window, what is the first thing that comes to your mind?**

There is light, there is air. In buildings, I always find it pleasing if there is sunlight coming in with good air circulation, as without those things the air is humid and uncomfortable. With windows, we can also practice urban farming, so the plants stay alive as well.

**Q: What kind of window/aesthetic are you interested in?**

I'm just interested in windows with more air circulation. The more air that comes in and the larger the circulation, the better it is for a room. The presence of windows can also minimize negative emissions as you don't need air conditioning.

**Q: Could you recommend 3 films that you watched in 2023?**

I always recommend films that change people. One of these is Semesta (Islands of Faith). The movie raises awareness of environmental activists, and what they do can inspire us. Pulau Plastik, another Indonesian movie is good, inspiring us to reduce plastic use. Then there's Octopus Teacher, a film that made me more aware of the relationship between humans and animals.

**Q: What are your biggest hopes and dreams for the creative industry in Indonesia? Especially in regards to sustainability?**

The creative industry is close to sustainability. As designers, we create solutions, and if those solutions damage the environment then they are not solutions. With global warming and the climate crisis, we have to incorporate more eco-friendly solutions. Plastik made of earth oils, practical and sustainable, how we as designers create non-waste solutions.



A renowned fashion designer from Indonesia with 27 years of experience in the industry, has earned global recognition for his visionary work. He shared with Layers by Coulisse INK his belief in the power of Indonesian fashion to set global trends.

Words RIRI WAROKKA

Photo HENDRA KUSUMA, MOKO WONG, YUDI TAMPUBOLON, DOC. RINALDY YUNARDI

The Figure

# Rinaldy Yunardi





**Q: What motivates you to create fashion art continuously?**

It all began with a tiara I designed, which set me on this incredible journey in the fashion industry. Every piece I create has a story reflecting years of learning and evolving. My passion for fashion keeps me going, and I thrive on challenges. I pour my heart into every design, and that's what drives me to keep creating. So, the simple key is that it's all rooted in a sincere love and dedicated life for creating art, keep exploring and delivering the best that comes from the heart.

**Q: We acknowledge that your art isn't just in fashion, but spans across other mediums. Have you ever felt lost or stuck?**

Stuck? Of course, sometimes I face that, but I'm the type of person who is easily inspired and feels alive just by talking to others and observing the beauty around me. One thing for sure, the more I surrender; the deeper I dive, the more I give myself fully on creating art without being confined by any medium, I realize that every second is a gift, never wasted.

**Q: Fashion is shaped by trends. Do they influence your work in any specific way?**

In the past, we often followed trends from abroad, looking to legendary designers for inspiration. But now, fashion in Indonesia has evolved. My colleagues and I, who've been in the industry for years, believe we have the right to create trends, drawing inspiration from the rich, diverse culture of Indonesia. For me, I've learned to be independent and idealistic: this is who I am, and this is my work.

**Q: Would you consider Indonesia's culture to be your biggest source of inspiration?**

For me, my work doesn't always look like the usual ideas of traditional style because I love mixing different cultures. I'm not trying to stick to the "East meets West" idea; I might mix elements from Sumatran and Papuan cultures, especially for Indonesian weddings. The key is capturing the essence without destroying the culture.

**Q: Who is your biggest inspiration?**

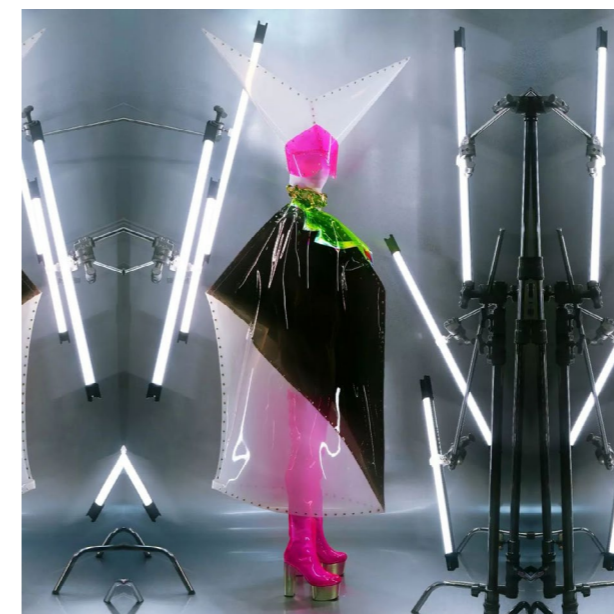
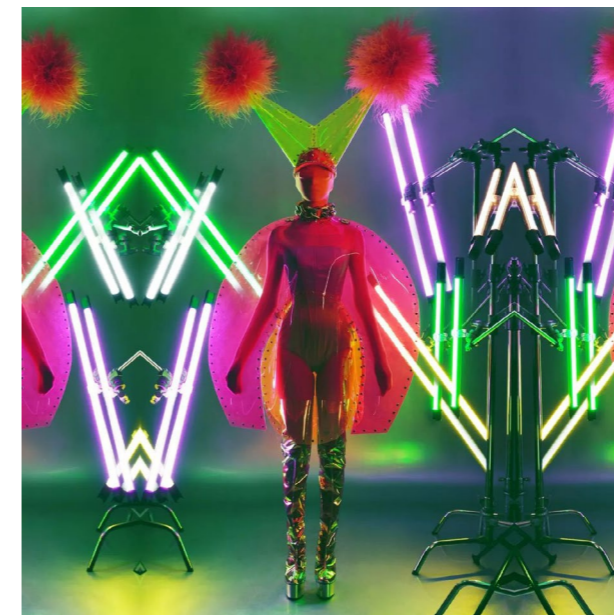
The biggest one is Mom and Dad. Then, Jean Paul Gaultier and Thierry Mugler.

**Q: What is the most important creative process that shapes your fashion identity?**

I am the type of designer who is very hands-on, involved in every process in my studio, ensuring that every detail aligns with my vision. I explore unique materials and experiment with the materials itself and the production details. The process of combining them is the longest, as it requires careful development to merge both in a harmonious way.

**Q: Does coming up with the concept for a collection also take a long time?**

I usually just need several hours of distraction-free time to complete an entire collection—or even more. Once, I even finished an entire collection for the next two years. People are often curious about what's inside my head, given how easily and quickly I can come up with concepts or ideas.



**Q: What kind of interior environment helps you during the creative process?**

I chose a room that's a bit dark and closed off, with dramatic lighting. In fact, for my studio interior, I don't like too much decoration—it can be distracting. I prefer neutral, open spaces that feel like an empty canvas. I want my work to speak for itself. I also like keeping the windows closed, with no sunlight coming in, so I can focus and let my ideas flow freely.

**Q: What is the first thing that comes to mind when you hear the word "window"?**

A window is a gateway to the world. Free your mind to create your art. A window allows us to stay connected with the times while offering a view to find inspiration in everything around us.

"We have the right to create trends, drawing inspiration from the rich, diverse culture of Indonesia."

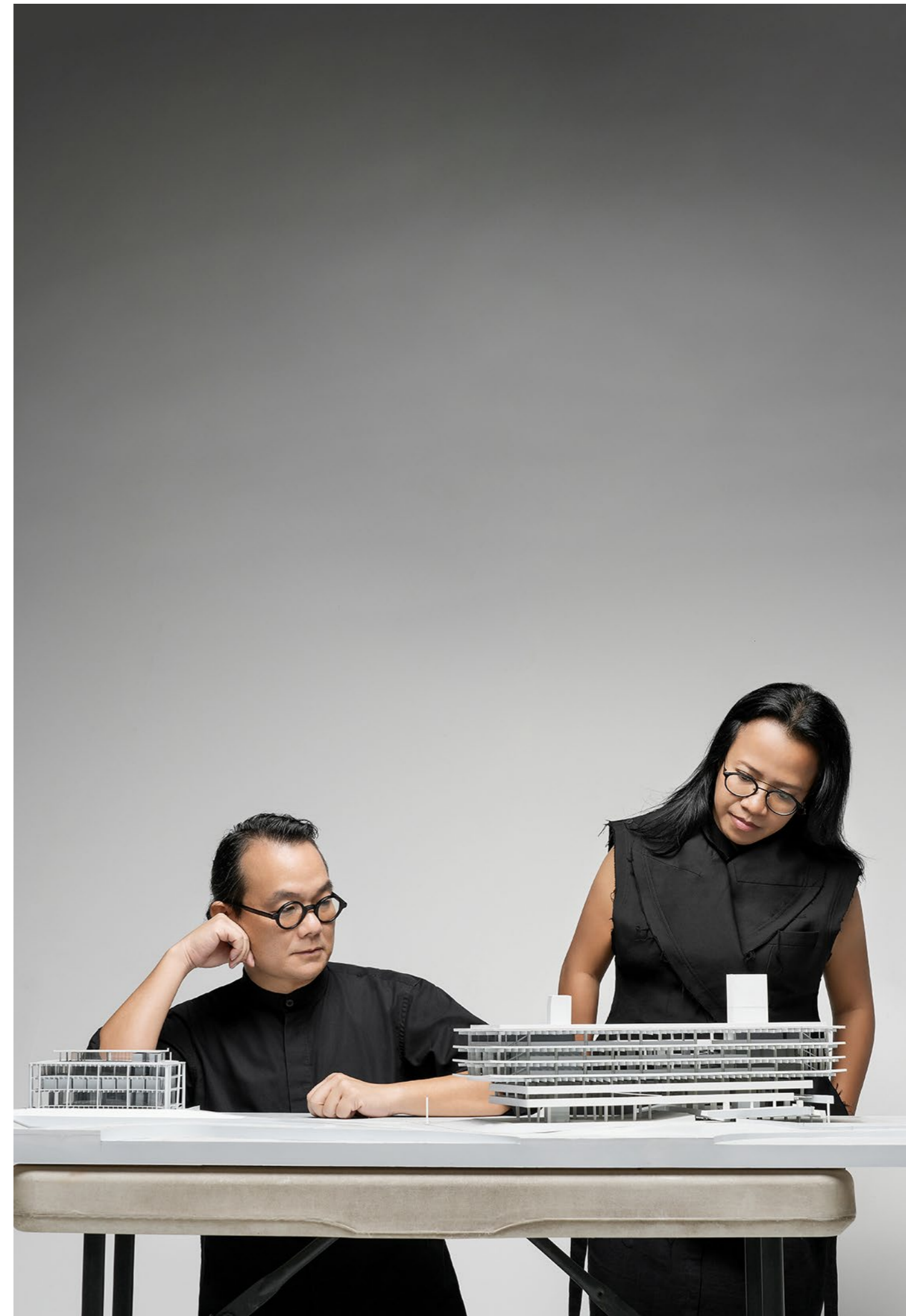
Having recently completed the renovation of The Meru, formerly known as The Bali Beach Hotel, this Jakarta-based architecture firm has been creating influential designs since 2000. Founders Gregorius Supie Yolodi and Maria Rosantina share their architectural philosophy.

Words RIRI WAROKKA

Photo DOC. YOLODI+MARIA ARCHITECTS

The Figure

# Yolodi+Maria Architects





**Q: Congratulations on The Meru Sanur project. So, what next? Please share with our readers.**

We are working on various projects with different functions in diverse locations. The diversity of functions and contexts always makes us enthusiastic about our work, as there are always new challenges to respond to and think through. This, in turn, sparks additional creativity.

**Q: What lifestyle do you see emerging in Indonesia or globally? In what way did this affect your design approaches?**

Perhaps we should start with the basics: there is truth in architecture. Architecture must be right. For us, architecture must fundamentally respond well to the context of its place, climate, culture, and society. It is not just a technical issue or a matter of aesthetics, but about creating meaningful, soulful spaces that respect both humans and

their environment. Of course, as times change, architecture must also adapt to meet new demands, such as evolving lifestyles.

**Q: What aspect of your design process allows you to tell a 'story,' and how do you make architecture convey emotions?**

The most important aspect of our design process is understanding and responding to the context, as well as grasping the essence of the project. By thoughtfully engaging with its context, the design should be able to tell a 'strong story'—in other words, to have character. We believe that architecture is not just about fulfilling a function, but about creating an experience. In every project, we strive to make the building not merely a structure, but a medium through which stories and emotions, relevant to the place and its community, can be conveyed.



“We strive to make the building not merely a structure, but a medium through which stories and emotions, relevant to the place and its community.”

**Q: What design principles align with your values?**

The design principles we adhere to aim to create architecture that is not only beautiful but also contextual—responding to the place, climate, people, and local culture, while of course being sustainable. We believe buildings should be a harmonious part of their surroundings.

**Q: How would you like people to put a 'label' on Yolodi + Maria's architecture?**

For us, what is most important is adhering to the design principles mentioned before and consistently dedicating energy to making them a reality. We also believe that character will naturally emerge from this approach. Additionally, the labels given to existing outcomes are simply consequences of this process.

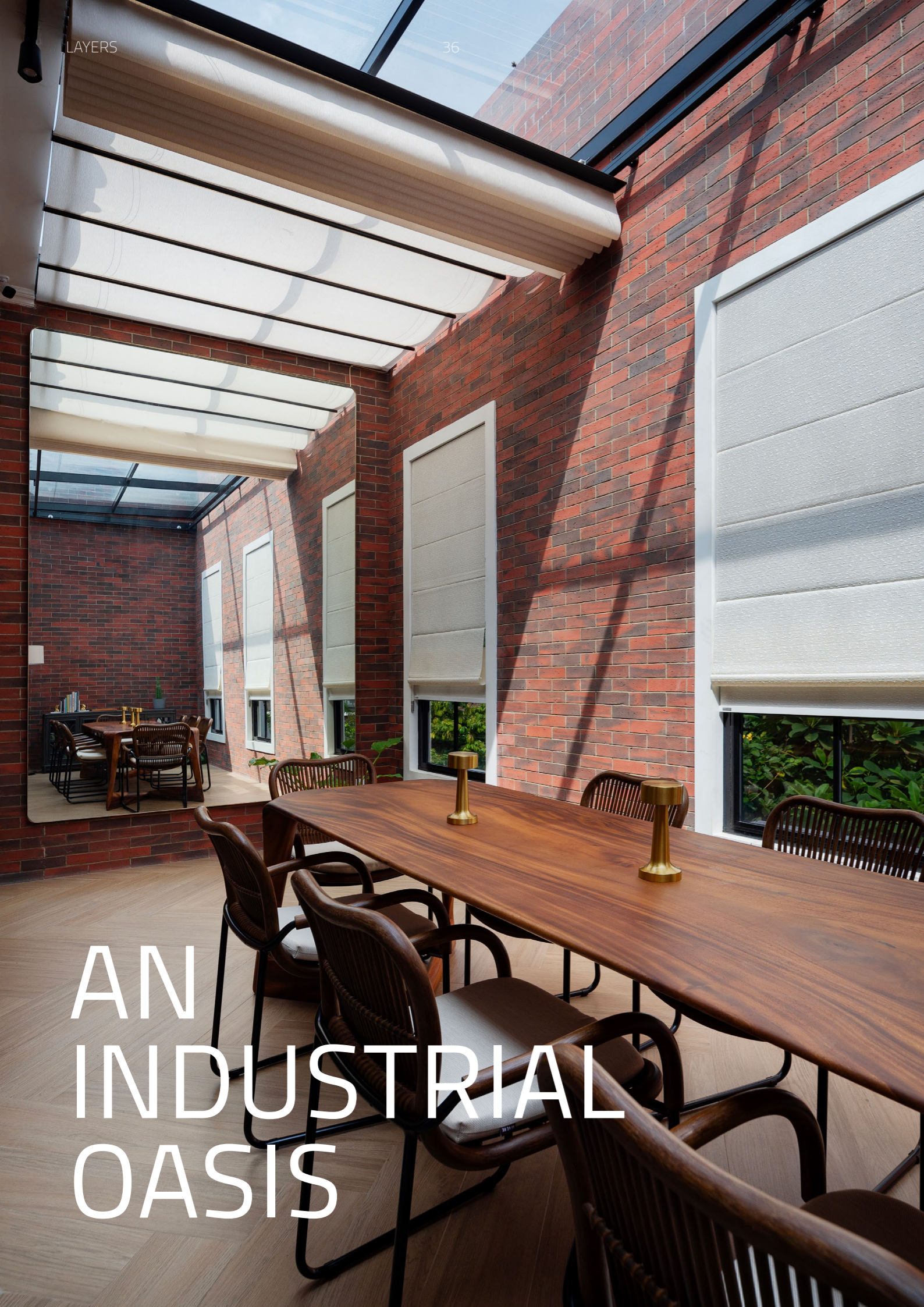
**Q: What is the window's role in modern architecture? How important is the placement?**

We know that openings, such as windows, play a key role in shaping space in architecture. They help create spaces designed to fulfill specific functions, while also reflecting the desired character envisioned by the architect. Of course, placement and details are crucial components of architecture.



# The Frame

A seamless blend of elegance, modernity, and contemporary design is thoughtfully presented in perfect harmony. Whether in a private residence or a high-end Hotel & Apartment, every detail enhances the other, unified by a refined color palette and a sophisticated aesthetic.



# AN INDUSTRIAL OASIS

## The Frame Residence at Jakarta

This seemingly industrial living space combines exposed brick walls and rich wooden accents, creating a modern yet inviting atmosphere. Thoughtfully designed with Coulisse roller blinds.

Designed by KENNETH STUDIO  
Photo by DOC. KENNETH STUDIO



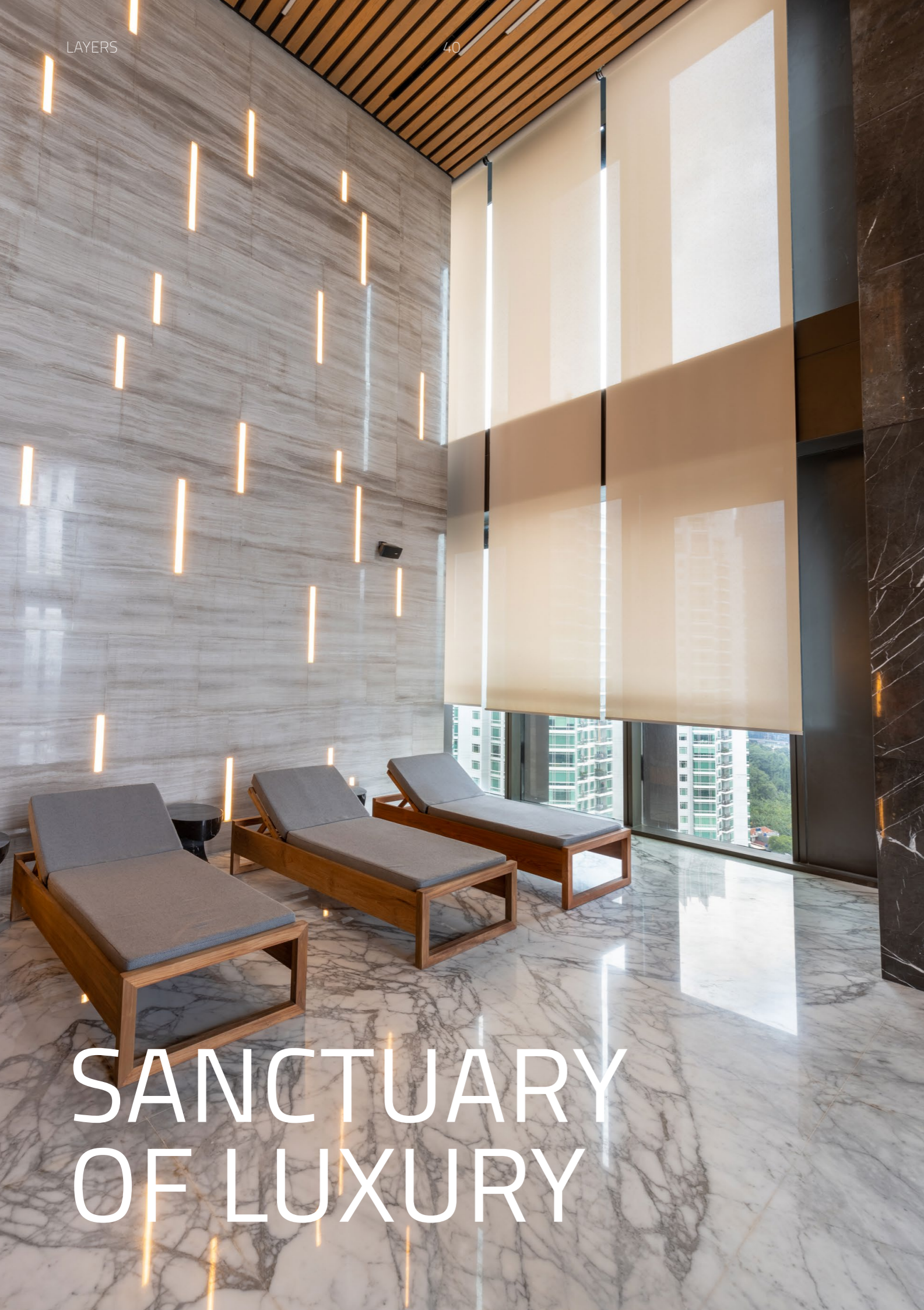
Dominated by an industrial contemporary look, the interior features exposed brick walls that add a raw, urban edge to the living space. This striking backdrop is complemented by rich, deep wooden accents, creating a strong presence throughout the home. Thoughtfully placed Coulisse roller blinds enhance privacy while allowing natural light to filter gently into each room, infusing the environment with warmth and brightness. The design seamlessly integrates raw materials with sleek finishes, fostering a modern yet inviting ambiance.

Large openings in each room encourage a sense of flow—whether dining, getting cozy on the sofa, or watching kids play—inviting relaxation and introspection. Every detail of the roller blinds has been curated to reflect both style and functionality, making this home an ideal sphere for creating memories. The harmonious blend of industrial elements and soft natural light transforms the atmosphere, creating a lively environment that feels grounded and airy, allowing residents to enjoy the best of contemporary living.



GOD CAN DO  
ANYTHING

THIS  
HOME  
IS blessed



SANCTUARY  
OF LUXURY

## The Frame St. Regis Hotel and Apartment

The private facilities of a prestigious hotel and apartment in the heart of Jakarta showcase a seamless blend of elegance and comfort. Partnering with Laudem Deo, Coulisse INK offers a simple touch that exudes luxurious tranquility.

Designed by GA DESIGN  
Photo by RAYMOND ELIEZER



The interior of this elegant prestigious hotel and apartment is a masterful blend of luxury and comfort, creating a serene sanctuary amid the bustling city of Jakarta. Each space is thoughtfully designed, reflecting harmony through high-quality textures, a rich color palette, and lavish furnishings that invite relaxation, all infused with luxurious charm. Each room has a thoughtfully arranged special function that engages a journey of relaxation, filled with natural light streaming in through large windows.

Coulisse roller blinds elegantly frame the windows, providing soft boundaries between the tranquil interiors and the vibrant energy of the outside world. These blinds allow natural light to filter in gently, enhancing the soothing ambiance without compromising privacy. Unwind in a luxurious beauty parlor, a peaceful indoor pool, or opulent dining areas, all designed to ensure a perfect retreat. The versatility of Coulisse INK's roller blind offers a unique ambiance, creating an atmosphere that embodies the true essence of a refined lifestyle full of comfort.





# REFINED URBAN DWELLING

## The Frame Casa Akara

Nestled in the heart of Jakarta, this home offers relaxed modern elegance, with wide windows allowing natural light to fill the rooms. A perfect harmony of sleek lines and airy spaces creates a contemporary tropical dwelling.

Designed by KENNETH STUDIO  
Photo by WILLIAM KALENGKONGAN



Tucked away in Jakarta's bustling heart, this home is an urban escape that combines modern design with tropical comfort. Wide windows fill the living space with natural light, framing the cityscape and seamlessly connecting the indoors with the outdoors. Clean lines and simple, sophisticated finishes create a sense of tranquility, making this home the perfect blend of style and function. The strategic use of natural light highlights the home's warm, contemporary aesthetic, while elements like Coulisse INK roller blinds provide practical flexibility.

The bedroom and dining area are purposely designed to be filled with natural light, creating an open and inviting atmosphere. In contrast, the living room offers a more intimate, secluded atmosphere, where the mood transitions to a sense of privacy and quiet comfort. The blinds allow the brightness of the rooms to be easily adjusted, offering comfort and control over the tropical sunlight throughout the day, a haven ideal for city living in Jakarta. This home is not just a space, but a sanctuary that effortlessly adapts to the rhythm of daily life with contemporary color palette.





# The Collection

Aligned with our values of creating solutions that enhance spaces and support sustainability, we envision the future with Coulisse INK's Living Beauty collection. Focused on three core pillars, we offer a wide range of fabrics for your perfect roller blind choice.

# The Collection: A Vision for a Better Future

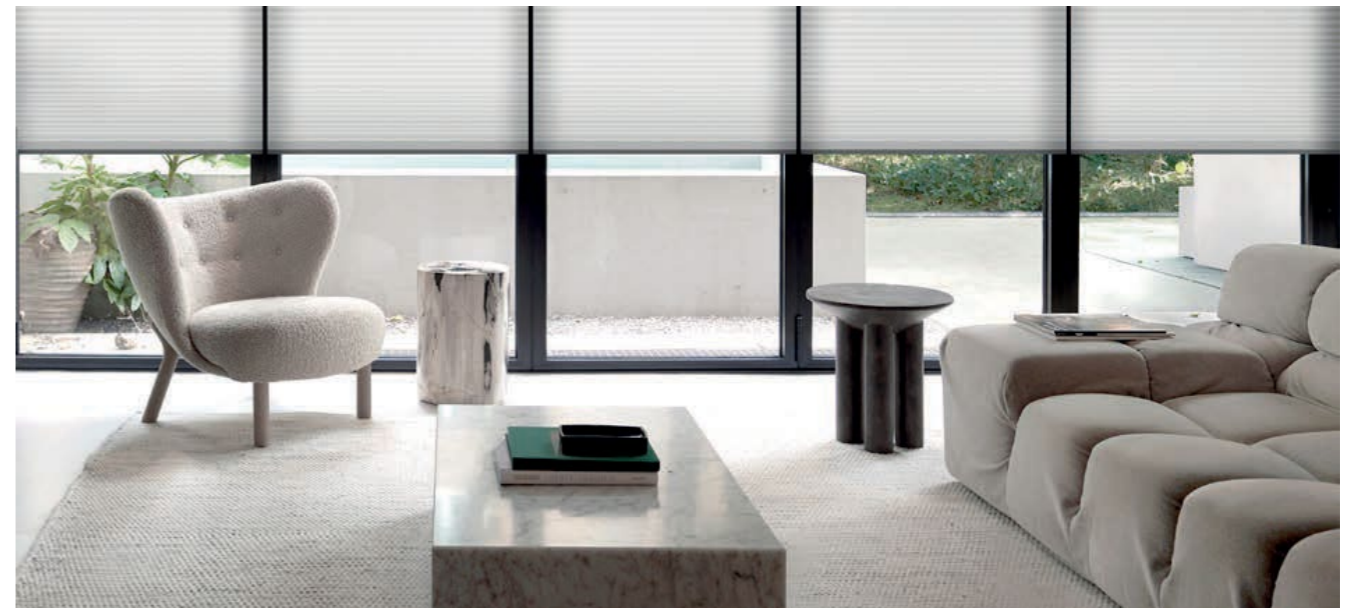
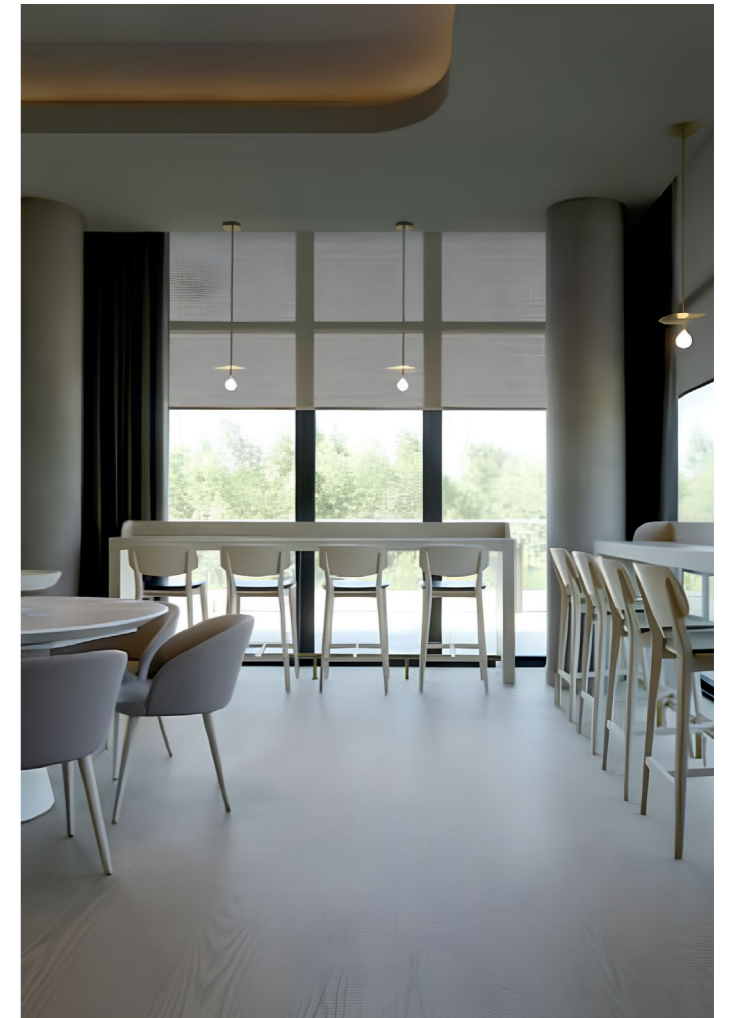
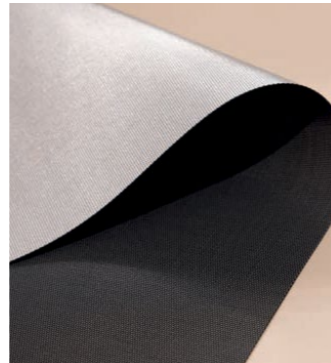
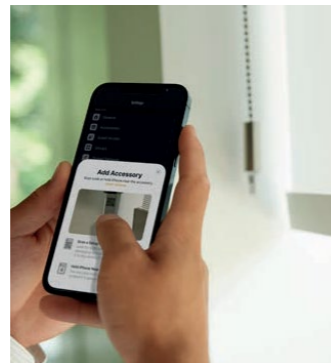
Three powerful mega-trends are shaping the world today, each significantly influencing the design of our Living Beauty collection: climate change, the rise of technology, and the growing focus on well-being. These trends inspire us to define three core pillars for the Coulisse window coverings solutions collection:

Smart & Functional, Beauty & Well Being, and Impact on the Planet. Each pillar reflects our commitment to crafting products that not only enhance the spaces they inhabit but also contribute to a more sustainable and balanced world.

## Smart & Functional

In today's world, smart, functional window coverings are key to controlling light, temperature, and energy use. Our innovative energy-saving fabrics and MotionBlinds technology bring effortless comfort, safety, and convenience to everyday life.

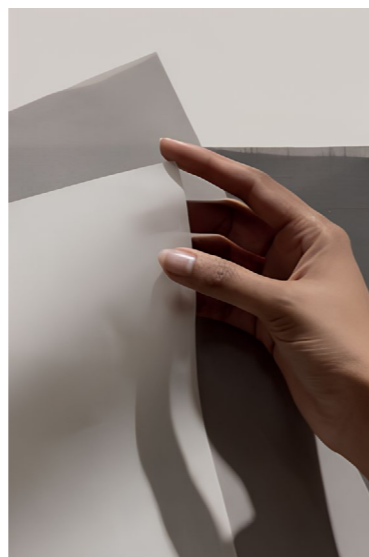
Coulisse INK's energy-saving fabrics are designed to optimize efficiency, reducing energy consumption while enhancing comfort. With flame-retardant materials, we ensure added safety for your home. Enjoy better light control, allowing you to adjust your space to the perfect ambiance. Improved acoustics create a peaceful environment, reducing noise and enhancing tranquility. Our solutions offer a comfortable climate year-round, keeping your space just the right temperature. With advanced glare control and smart technology, we provide easy, convenient living that adapts seamlessly to your needs.



# Beauty & Well Being

Well-being is essential to our well-being. For this reason, we've created window coverings inspired by nature, featuring soft forms, textures, and tactile elements, designed to enhance mood, create calm, and bring happiness to everyday life.

Surrounded by beauty, Coulisse INK creates spaces that inspire a sense of calm and joy. Natural colors and tactile materials invite a deeper connection with the environment, enhancing both sight and touch. Soft, rounded forms bring a feeling of comfort and ease, making every room feel more welcoming. The warmth of nature and the timeless appeal of wood bring a sense of tranquility and grounding to your home. This blend of elements fosters a feeling of happiness, creating a space where you can truly relax and recharge. It's about soulful living—where beauty, comfort, and nature come together in perfect harmony.



## Impact on The Planet

We design purposeful, sustainable window coverings—crafted to benefit the environment while enriching our lives and shaping a better future. We believe action is essential to combat climate change and improve our lifestyle for a healthier planet.

We've thoughtfully downsized our collection, focusing on responsible choices that prioritize sustainability. Our energy-saving fabrics are designed to reduce environmental impact while enhancing comfort. We are committed to using recycled fabrics, ensuring that each product supports a circular economy. Coulisse INK's FSC®-certified bamboo reflects our dedication to responsible sourcing, protecting forests for future generations. With OEKO-TEX® certification, we ensure that our fabrics meet the highest standards for safety and sustainability, free from harmful substances. Every element in Coulisse INK's collection is a conscious step towards a greener, more sustainable future.





# The View

## Elevate With Luxury

Located in Pakuwon Mall, Surabaya, the city's largest and most anticipated interior exhibition was held. From October 4th to 20th 2024, this spectacular event showcased the latest trends and innovations in luxury interiors, offering design enthusiasts, homeowners, and industry professionals an exclusive glimpse into the future of high-end living.

In keeping with its title, *Beyond Living*, this exhibition presents spectacular spaces that exceed expectations, offering endless inspiration. Collaborating hand-in-hand with four of the most renowned names—PAI Design, Hadiprana, KantorGG, and Endramukti—this exhibition perfectly blends distinct styles to redefine luxury living, merging creativity with elegance and sophistication, all while maintaining comfort.



One standout feature was Coulisse INK's window covering solutions, which played a pivotal role in enhancing the exhibition's overall aesthetic. With their exquisite collections, Coulisse INK brought a refined touch to the windows. The neutral color palette of their fabrics created a soft, serene environment while maintaining an air of sophistication. The textures provided depth and warmth, elevating each space.

Coulisse INK's commitment to design excellence perfectly complemented the work of PAI Design and Endramukti. Both created distinct functional spaces that redefined the concept of luxury living, proving that true elegance lies in the balance of beauty, comfort, and functionality. With each style thoughtfully curated, the exhibition left a lasting impression, offering a fresh perspective on how modern design can elevate daily life.



# The View

## The Future of Smart Homes

As part of the inspiration series of talks at The Colors of Indonesia (TCOI) 2024, held last September at Senayan City, a captivating round table discussion titled Tropical House in 2050 gathered four talented designers to explore the future of interior design and how technology will shape our living spaces. At the heart of the conversation, led by APEC Director of Coulisse, Roger Krabbe, and well-known interior designers: Ary Juwono, Yuni Jie, Joke Roos, Vivianne Faye, and Sammy Hendramianto, was the latest intelligent innovation from Coulisse: Motionblinds, a cutting-edge window covering solution that addresses the demands of the modern lifestyle by focusing on the convenience of home automation.



Motionblinds can be effortlessly controlled via voice commands through platforms like Google, Apple, Amazon, SmartThings, and ABB. This intelligent connectivity allows users to easily adjust window coverings, creating a more comfortable, energy-efficient, and intuitive living environment. With its sleek, minimalist design and practical features like a USB-C rechargeable battery and navigation buttons, Motionblinds blends seamlessly into today's modern lifestyle, making everyday tasks more convenient while elevating the ambiance of spaces.

The discussion sparked fresh ideas on how tropical homes will evolve by 2050, blending technology, design, and sustainability. The four designers shared their visions of 'Summer Homes,' the main theme of TCOI 2024, which not only embraces Indonesia's advancements in comfort and trend but also anticipates the possibilities of tomorrow—where innovation meets comfort and creativity knows no bounds. It offered a glimpse into a future where homes are smarter, more connected, and more inspiring than ever.







# COULISSE | INK

since 1992

Phone | (+62) 21 29376430 (+62) 21 293643431

Whatsapp | (+62) 812 8383 0448

Email | [info@coulisse.co.id](mailto:info@coulisse.co.id)

Website | [www.coulisse.co.id](http://www.coulisse.co.id)

Instagram | [@coulisse\\_ink](https://www.instagram.com/coulisse_ink)

Showroom | Jl. Ahmad Dahlan No. 22,

Kebayoran Baru, Jakarta Selatan 12220, Indonesia

Warehouse | Jl. Pangkalan 6, Gang. Masjid No. 38A,

RT.002/RW.002, Ciketing Udik, Kec. Bantar Gebang, Kota

Bekasi, Jawa Barat 17153

