

LAYERS

Journal
02

COULISSE | INK
since 1992

A window to a good life

LAYERS

Journal
02

COULISSE | INK
since 1992

DIRECTOR OF INK
Jenfilia Suwandrei Arifin

EDITOR
Simpul Group

ART DIRECTOR
Simpul Group

WORDS
Simpul Group

ON THE COVER
Designed by Laurence Howell
from Indez Design
Photo by Coulisse INK



LAYERS by INK is a journal published triannually, serving the latest observations and trends in the world of design.

CONTACT US
Phone | (+62) 21 29376430
(+62) 21 293643431
Whatsapp | (+62) 812 8383 0448

info@coulisse.co.id
www.coulisse.co.id
@coulisse_ink

Showroom
Jl. Ahmad Dahlan No. 22,
Kebayoran Baru, Jakarta Selatan
12220, Indonesia

Warehouse
Jl. Pangkalan 6, Gang. Masjid
No. 38A, RT.002/RW.002,
Ciketing Udik, Kec. Bantar Gebang, Kota
Bekasi, Jawa Barat 17153

3

COULISSE INK

4 Editors Letter

5 About
Coulisse & INK

7 On Radar
Calissa Home

8 The Good Earth
The Pearl of Twente:
Reclaiming Biodiversity

10 Special Report:
An Unforgettable Collaboration
Coulisse INK x The Colours of Indonesia

18 The Figure
Amalya Hasibuan
Sammy Hendramianto
Yori Antar

32 The Frame
The Chambers of Elegance
Contemporary Lux
Comfort in Tune

46 The Collection
Best Seller Roller Blinds
New Fabric Collection
Coulisse Lienesch Collection
Motion Blinds Matter

58 The View
Rebuilding and Reconnecting
The Art of Bespoke

Contents

Editor's Letter

When it comes to making a relationship with nature, humans tend to have the ability to search for a way to reinvent it and reconnect. As a premium roller blind brand, we have always been inspired by the powerful connection between our living space and the natural world. Over the past few years, a remarkable shift has been occurring in the world of interior design—a movement towards biophilic design. This trend is more than just an aesthetic choice; it's an act out of an urge to connect with nature.

At Coulisse INK, we believe that window placement, particularly roller blinds, plays a crucial role in this design trend approach. Our blinds are curated and designed not just to regulate light and privacy, but to enhance the natural beauty surrounding us—whether it's filtering sunlight to create a warm mood, inviting atmosphere, or framing a view that connects you with the outside world. As seen in the current event INK involved, The Colour Of Indonesia, we continue to deliver the role of bringing innovative solutions to create a bridge between functional roller blinds with an elegant style yet still feel close to nature.

But as we embrace the value of this trend, together with UMA Nusantara, INK also stands for a more cultural-focused purpose. This means being mindful of the importance of culture preserved. For us, it's about respecting Indonesian roots and heritage that align with our values. As we continue to innovate and evolve, INK invites you to join a journey full of LAYERS involving an aesthetic step towards a more harmonious connection with nature as well as a culturally conscious future.

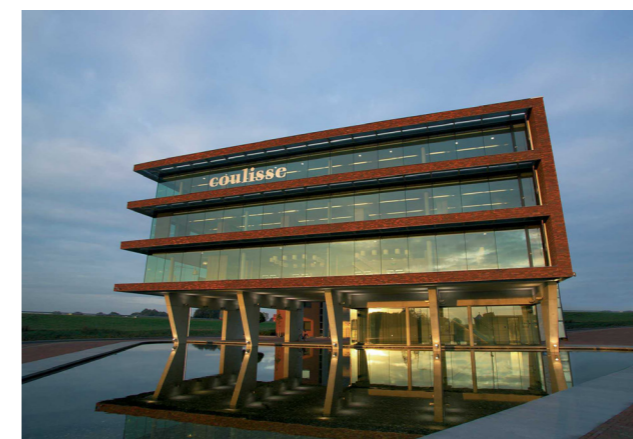
Jenfilia Suwandrei Arifin

Director of INK

About Coulisse

Windows frame our vision of the world from the safety of the indoors. They offer us the opportunity to observe what is happening outside, and shape just how we perceive things. The look and design of a window is as important as the view it holds, changing our impression of what we see through the ornaments, the shape of the windows, how much natural light they allow, and more.

Coulisse itself has been creating inspired window coverings as far back as 1992. We are known for our design approach, which incorporates the objective of turning windows into parts of a home that manage to offer comfort as well as style and personalization. We use innovative systems and smart technology to develop forward-thinking collections of products to produce indoor spaces that are comfortable, safe, energy-efficient, and an exceptional expression of yourself and your tastes. All of our products are developed by our Marketing and Design Studio as well as our Engineering department in our headquarters in Enter, the Netherlands.



About INK

Indonesia has a rich design culture, and an increasing taste for items that go beyond function and offer beauty and elegance. More and more of our people look for items that can give a unique identity for their home without compromising on quality or use. Specially designed items by esteemed brands and designers are becoming more commonplace, for every aspect of a home, and windows are an essential part of this.

Imaji Nata Kirana (INK) has been Coulisse's official partner since 2016, bringing cutting edge and creatively rich European window coverings to Indonesia. By working together, we introduce people to a world of inspiring window coverings, offering the possibilities in creating a personal space that stimulates well-being, productivity and comfort. Our work and our approach is inspired by multiple factors, including nature, design, fashion, and architecture. We are the ideal solution for any window covering needs, offering innovative systems for both residential and project markets.





On Radar Calissa Home

ARTISTIC PATTERN

Natural explosions of color and pattern are the main charm of this pillow cushion. By expressing a vibrant energy of pure fantasy, Calissa Home shows comfort in an artistic way. As a window covering, Coulisse also focuses on creating a space with a new meaning of comfort.

ATTENTION TO DETAILS

Strokes of white delicately gave a feminine touch to the gray fabrics of table runners. Designed and crafted by Calissa Home, the bird silhouette is carefully beautified with special beads. In line with Coulisse's beauty, this arrangement detail is flawless.

The Good Earth



The Pearl of Twente: Reclaiming Biodiversity

Words ADIL AKBAR

With the advances in agriculture and other industries, we have been offered a convenient and comfortable lifestyle. However, in the process of advancing these industries, we have neglected the environment around us as well as the various species that populate it. Biodiversity is key to the earth's sustainability, with the many species that make up an ecosystem playing a part in its conservation.

It is this concern that brought our co-founder and co-owner, Maurice Roetgering, to introduce an initiative to reclaim land for the sake of biodiversity in his hometown of Enter, part of the Twente

region of the Netherlands. Besides being home to our headquarters, the region is also home to the historic Regge river and brook valley, which has been canalized due to agricultural expansion.

The main goal of reclaiming this land is to manage the bird population in the region, with many species, especially meadow birds, struggling. These birds rely on finding a safe haven on 'non-productive' (in the sense of agriculture) land, where they can nest amongst the resources of natural vegetation and insects. These endangered species need their rest and shelter, to protect themselves from predators and thrive.

To initiate this project, Maurice acquired land along the river with his childhood friend, Chiel Bolscher. This was done to allow the river to once again flow freely, and the two collaborated with the regional water board, the municipal, and provincial authorities to draw up plans for the project.


More than 27 hectares connect the existing nature areas to provide room for biodiversity, with five hectares being developed into a wetland area in the Regge brook valley. This will allow the river to flood, in order to give the meadow birds an ideal habitat. In executing this project, Maurice and Chiel consulted with meadow bird specialists and the regional foundation for agricultural nature management to accurately and effectively recreate these habitats.

This project has engaged and pleased locals, cyclists, and passers-by, but Maurice plans to go further by restoring the De Parel farmstead with his brother Christiaan to connect with the natural reserve. The De Parel is a historic farmhouse with outbuildings dating from 1600, and part of the brothers' childhood. Through these projects, Maurice along with Christiaan, Chiel, and other collaborators want to reclaim the land, its environment, and the De Parel to recreate and make it "The Pearl of Twente."



Special Report

TCOI
2024
SUMMER HOME



Bringing an inside look into the most awaited interior design exhibition, The Colours Of Indonesia 2024 by ID12. Room by room is greatly designed, and every detail collides, creating a characteristic yet elegant "Summer Home".



An Unforgettable Collaboration

Coulisse INK x The Colours Of Indonesia

Words RIRI WAROKKA

A KEY TO A HOME

This year marks a significant milestone in the interior design community: the 10th anniversary of the most awaited event, The Colours Of Indonesia (TCOI) design exhibition. To commemorate this decade of creative excellence, in September 2024, TCOI is thrilled to present a showcase under the theme “Summer Home”. This special exhibition brings together twelve visionary designers—known by ID12—each offering elegant and inspiring interpretations of summer living through various rooms. Mirroring the splendor of tropical climates of Indonesia’s nature, ID12 is carefully crafting various visuals to mark the upcoming design trend of a leisurely holiday at an exquisite villa.

We’re living in a tropical country where beauty comes from an abundant amount of natural light. Here, at an exhibition held at Senayan City, Coulisse INK—a premium roller blind brand—seizes the tropical breeze and mood in the interior design realm. Intertwined with the spirit of collaboration, togetherness, and creativity, Coulisse INK and TCOI speak the same design language to make a full narrative inspiration of a home.



THE COLOURS
OF INDONESIA

THE VISION OF MODERN LIVING

Since 2016, Coulisse INK has partnered with ID12 to create a vision of the prestigious interior design exhibition. This year, we’re collaborating with four renowned designers of ID12: Joke Roos, Vivianne Faye, Yuni Jie, and Sammy Hendramianto as a creative alliance that underlines the brand’s purpose in the design world.

On this 15day exhibition, Coulisse INK will highlight innovative smart home system solutions, emphasizing advanced roller blind technology for enhanced home automation. We offer a solution called Motionblinds for four various exhibition spaces that are carefully curated to complement the unique design themes created by each designer. Motionblinds, an automation for window covering brand created by Coulisse B.V. is the only brand that collaborating with Eve, a smart home system from Apple. But now, with Matters technology, Motionblinds is easily connected to all brands, such as Samsung, Google, and others. While in fashion and design aesthetics, Coulisse INK offers new amazing fabrics that soon will be in our catalogues. From minimalist settings to bold eclectic spaces, the blinds are integrated seamlessly, demonstrating their adaptability and role as an essential element of interior design.

Realizing a similar value with TCOI and actively contributing to the design community, Coulisse INK has demonstrated that window treatments are more than just an afterthought—they are an important element in the creation of inspired and functional interior spaces. This collaboration on the 10th anniversary of TCOI marks a significant step in redefining the role of roller blinds in the world of interior design, offering new possibilities for designers and homeowners.

An Unforgettable
Collaboration
Coulisse INK x
The Colours of
Indonesia



A SERENE SPHERE

A harmonious blend of warm and serene atmosphere fulfilled the entire space. Characterized by a monochrome yet earthy color palette, thoughtful spatial planning, and a strong emphasis on natural light enhancing a new experience of master bedroom arrangement. Incorporating large windows, this private space successfully creates a sense of openness and connection to the tropical climate of Indonesia. With the help of the technology innovation from Coulisse INK, roller blinds on the window and the skylight could be opened and closed only with Apple Home Pod.

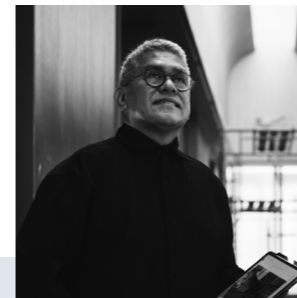


Joke Roos

With a career spanning several decades, Joke Roos—one of the founders of Studio Air Putih—has become a prominent figure in Indonesia's interior design community, celebrated with her ability to blend timeless design with refined elegance.

THE OPULENT RETREAT

The bathroom has evolved from a purely functional space to a sanctuary of relaxation and luxury. Incorporating daring detail of design can transform an ordinary bathroom into an experience of opulence. A striking marble surface, a statement bathtub, and a dramatic chandelier are the keys to crafting a timeless luxury. A bold orange-tinted glass creates a bold element that makes modernity collide with the extravaganza atmosphere. Connected to the Apple Home Pod, the Coulisse INK roller blinds embrace elegant detail that compliments the elevated whole look.



Sammy Hendramianto

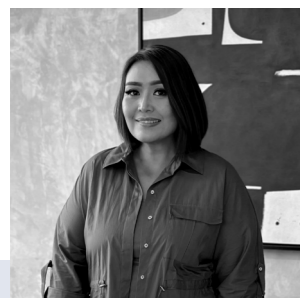
His design philosophy is deeply rooted in his appreciation for Indonesia's heritage which are hallmark of detailed design in elegant approaches. With his design firm, SHS Associates, Sammy Hendramianto continues to design with a bold narrative.

An Unforgettable
Collaboration
Coulisse INK x
The Colours of
Indonesia



A CAVE OF SERENITY

Inspired by Salt Caves, well-known for their tranquil ambiance and therapeutic benefits, a luxury spa room design by Vivianne Faye successfully brings an immersive experience that rejuvenates both body and mind. A carved wood shelf, organic textured walls, a hint of blue, and a sensory lighting arrangement with the addition of sound and smell of the sea complete the five senses to enhance the soothing experience. An open window covered by custom-designed Coulisse INK's roller blinds accentuates the resort feel.



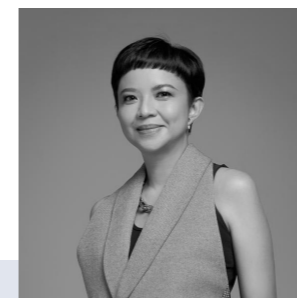
Vivianne Faye

Texture heaven is what Vivianne Faye is known for. With a keen sense of blending different styles and patterns with subtle glamorous, she carved out an original and unique design. Creating spaces that communicate sophisticated at the finest.



THE SATSUMA ORANGE

Blending the vibrant essence of Japanese Satsuma oranges with the warmth and *joie de vivre* of an Italian summer creates a distinctive and lively atmosphere for the kitchen and dining room. Yuni Jie's concept intertwined the delicate simplicity lines of Japanese aesthetics with the rich patterns of Italian style resulting in both refreshing and inviting. The color palette of this space is inspired by the Satsuma orange, a symbol of freshness in Japanese culture. Offers a harmonious environment perfect for cooking, dining, and gathering with loved ones, the window placement in the middle is covered by an ivory white Honey Comb fabric roller blind from Coulisse INK.



Yuni Jie

With her signature "The Art of Casual Elegance" look, Yuni Jie effortlessly crafted a strand of remarkable interior and home furnishing design. Recently appointed as an interior designer of the high-branded fashion store, her exploration of casual elegance has made a significant impact on the design world.

The Figure

With a commitment to elevate the identity of Indonesia, we meet icons from the design scene: Amalya Hasibuan, Sammy Hendramianto, and Yori Antar. Each boldly put an original character without hesitation and successfully created a peculiar flavor of Indonesia's nature as part of their design journey.

The Figure

Amalya Hasibuan



Green invasion was greatly reinvented by the one and only, Amalya Hasibuan. An artistic yet bold approach successfully captures the journey of her work as the director of Eshcol Floral Greens. Exclusively for LAYERS, Amalya bravely expresses the importance of a balanced connection between an architecture work and its surroundings, including the landscape.

Words RIRI WAROKKA

Photo AMALYA HASIBUAN DOCUMENTATION



Q: What is landscape design for you?

A: Many elements complement the whole landscape design. It's not only about the plants, but we need to consider the supporting elements, including artwork, reflecting pools, or as simple as choosing the perfect pot. The harmonized ambiance are essential to landscape design. It didn't stop there, landscape designers have to arrange the after-care system, as detailed as the water irrigation that is suited for each plant.

Q: What to consider when designing a landscape?

A: First, I need to take a deeper look at the architecture and interior design of the project. I'm able to visualize it by looking at the final design. It's the first door to see the needs, not only wants, of any landscape design. For more personal projects

like residency, the client's character and lifestyle are one of the main things to acknowledge.

Q: 3 important questions for clients?

A: The function, the lifestyle, and the house facing direction.

Q: What is the main message that you always want to portray in every creation?

A: One word, bold. I tend to approach the design with bold moves. Most of the time, involving unpredictable oversized objects, either trees, plants, or maybe sculptures.

Q: How to keep growing with each project?

A: I feel challenged on each of my projects. That is how I grow, by making connections with different

approaches. In the last couple of months, I've been working on a peculiar landscape design. It has a super minimalist feel, only filled with grass and a gigantic stone sculpture. It's exciting when I'm able to create different styles for each projects.

Q: What are the main ingredients of a perfect landscape design?

A: It should not overpower the whole design. But keep in mind that living elements entirely came from the landscape, so it indeed has a big role.

Q: What do you think about biophilic design as an emerging trend?

A: Like a little kid who is playing freely, without any fear. That's how I see myself when I practice biophilic design throughout my project. Biophilic design it's part of my DNA. I began to love plants very early. As

I grow up I learn about how to take care of them. I know their needs. It makes me more daring to approach ideas. I'm grateful for this kind of emerging trend. Now, people are open to the indoor greenery concept.

Q: How important is window placement?

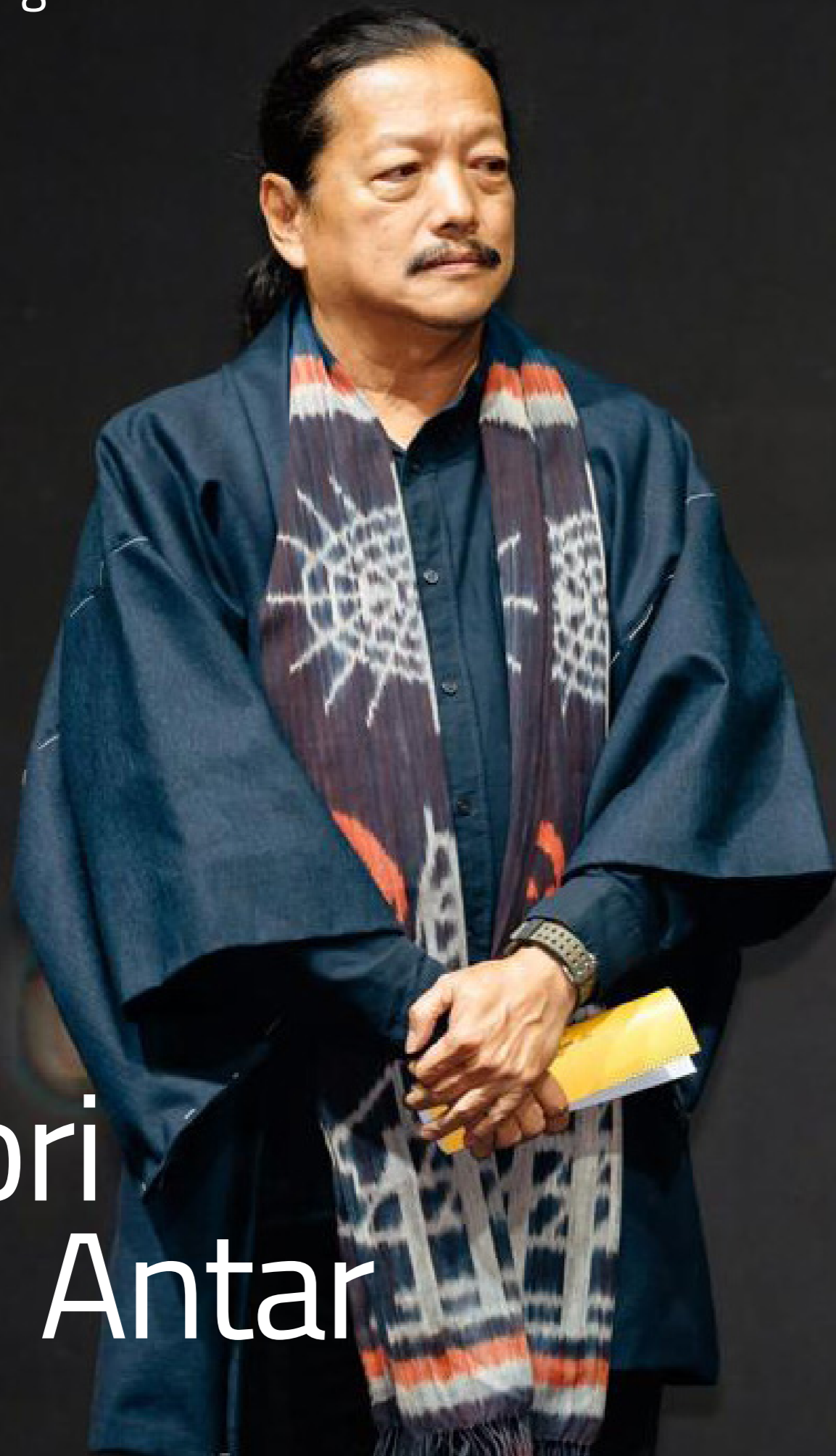
A: Very important. For me, how people enjoy the view of the landscape from indoors helps me decide what type of plant or artwork I should apply. Usually, the most favorite room in a house, or any building, always has a window that provides the best view of a landscape.

"The most favorite room in a house, or any building, always has a window that provides the best view of a landscape."



The Figure

Yori Antar



Yori Antar is one of the most prominent figures in Indonesian architecture, with years of experience. He has been named “Pendekar Arsitektur Nusantara,” due to his work in the preservation of traditional architecture. Read how he incorporate Indonesia’s culture in a new meaning of modern architecture.

Words ADIL AKBAR

Photo YORI ANTAR DOCUMENTATION

Q: What inspired you to be an architect?

A: I initially wanted to be an engineer, since my father named me after a Russian cosmonaut, but couldn't get my head into it. So I switched to architecture, and found it easier to understand since I had been exposed to it all my life. My father designed a lot of the buildings I interacted with and always gave me legos to play with.

Q: What led you to focus on traditional architecture? How do you incorporate elements of it into your work?

A: I worry about the progress in technology. Modern architecture uses drawing machines and computers, then comes AI. Will architecture all over the world become homogeneous? Yes, because we're using the same tools. In facing this, I found my answer in Indonesian traditional architecture.

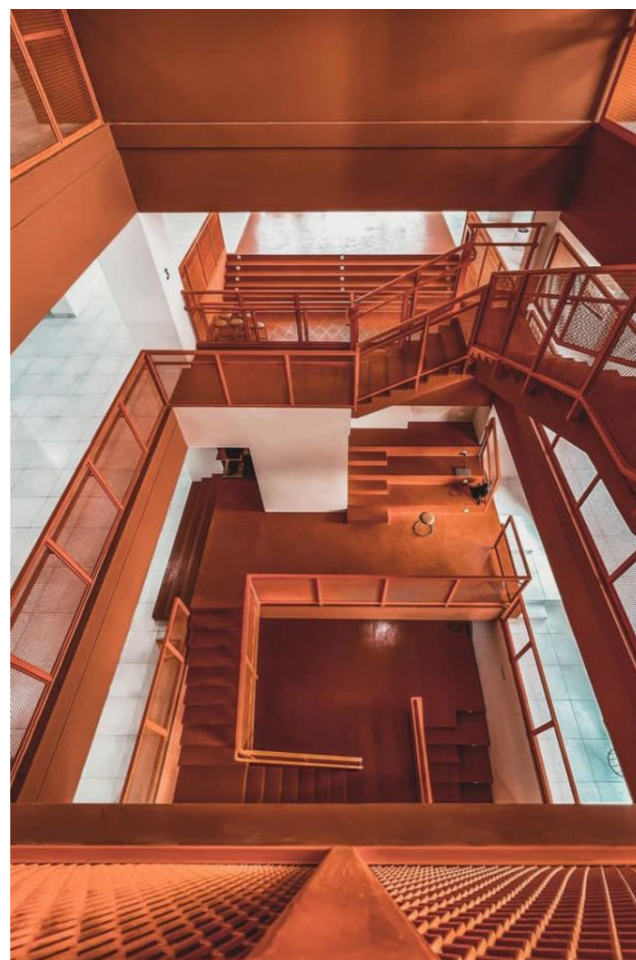
Q: In the architecture world, you're known as "Pendekar Arsitektur Nusantara", how do you feel about that?

A: Well, around the time I first became an architect in the late 80s, early 90s, everything was designed by foreigners. The ideas came from them, we were just drafters. We were never going to find the answer in books they wrote, in written culture. Remember, we are a two season country, not four, and traditionally we are a speaking-based culture. So, keeping that in mind, I dove into our traditional culture of nature and collaboration.

Q: When you hear the word window, what is the first thing that comes to your mind?

A: I always use the phrase, "window to the world." I always say through this window to the world we are shown our condition inside, as well as our condition outside. Depends on whether we want to look outside or inside.

"When talking about modern architecture, we can call it the most advanced, but we can also call traditional architecture the most advanced. It's a matter of mindset."

**Q: How do window play a part in traditional architecture?**

A: Windows' role are to help us see the world. Do we want to step outside or stay stagnant inside? If we want to progress we have to be able to leave our well.

Q: Are you aware of the biophilic design trend?

A: Our culture comes from how we communicate, socially helped along by *gotong royong*, with materials from nature. When we build, we do not hurt the earth. With traditional architecture, we start with rituals. Traditional society asks for permission from nature, communicating with it. This is viewed as outdated, and our culture is erased.

Q: Share with us your favorite local dishes and the best spots to get them.

A: I think Indonesia has the greatest cuisine in the world, is full of variety. In NTT, I love their sambal. If I go to the Badui people, I get salted fish. If you go to Western Sumatra, you eat Padang food, with all the women cooking what they call the best rendang.



The Figure

Sammy Hendramianto



As an owner of SHS Associates—an established design firm from one decade ago, Sammy Hendramianto continuously creates a balanced interior visual of luxury and function, with a detail of Indonesian elegance. Here, we got a chance to talk about the philosophy behind his characteristic interior style and how it is rooted in common sense.

Words RIRI WAROKKA

Photo SAMMY HENDRAMIANTO DOCUMENTATION



Q : What interior projects are you working on currently?

A : We have just finished a very prestigious project: The Meru & Bali Beach Sanur, a five-star hotel that is legendary because it was first built in the early times of Indonesian Independence and became the first and only high-story building in Bali. This time, we worked as one of the interior design teams under the coordination of the main consultant, Yolodi-Maria Architect.

Q : How do you keep the spirit and soul alive in your project?

A : There are 3 principles: trust, friendship, and responsibility. From gaining trust and growing friendship with the client to establishing a responsibility for me as an interior designer and for them as a client. Adding good nature,

enthusiasm, and gratefulness, I believe the next process is to simply enjoy every step of the project; planning, construction, to completion.

Q : What is the main message behind every creation of Sammy Hendramianto?

A : Designing is a job that is full of joy. We, designers, really pay attention to function and aesthetics. The blend of those two elements will create a comfortable space for anyone who sees our design. The functional aspect is not a hindrance in the process of creativity, but it matters for its long-lasting value. For me, design is also a combination of logic and senses to initiate details that make it stand out.

"I believe the amount of open spaces will determine how a home can feel close to nature."

Q : People are more conscious about nature and there's an aesthetic demand for biophilic designs. How is it affecting your design style?

A : In developing every design concept, I always consider nature and the environment. When it comes to design analysis, the team always focuses on bringing together an interaction between the interior and the surrounding environment. Space planning which develops a good connection between rooms with good air circulation and natural light is one of the main factors in a biophilic design. On top of that, water-based and eco-friendly materials are fully considered.

Q : What design style is in line with your values?

A : I always see space planning as the body of a person. If this body is fit, with good proportions, function, and appearance, you can put on any clothes, any style and they will look stylish. In this case, the clothes and styles are the design style; classic, modern, or contemporary. After good space planning, the rest must be done thoroughly without leaving anything behind. All aspects are fulfilled until it is time to enjoy and relish the space we created with joy and excitement.



Q : For you, how important is window placement in the main interior plan?

A : The placement of windows is very important because windows or openings create an interaction between the interior and the surrounding environment. Of course, the East-West direction becomes important for this. I believe the amount of open spaces will determine how a home can feel close to nature.

Q : Share 3 cities that gave you the biggest inspiration.

A : Milan, Paris, Los Angeles. Honestly, I don't have a specific city that gives me inspiration for our designs. Those 3 cities are more like the cities that I usually visit when it comes to interior exhibitions, or what I call "furniture buying trips".

Q : If you could give young interior designers some advice, what would it be?

A : The basic thing that is often forgotten by the new generations (not only young designers) is common sense. It is something that you have to train to build. Because to fully understand and apply value and knowledge to a design, common sense is crucial.

The Frame

A mixture of elegant, modern, and contemporary styles is successively being shown with a great proportion. Whether in a private residence or a multi-brand showroom, each detail complements the other with a harmonized color palette and a stylish yet calm form.

The Frame BPI Apartment



THE CHAMBERS OF ELEGANCE

Step into the private facilities of a prestigious apartment in the West of Jakarta, showing an elegant look in full admiration. Apart from a luxury feel, these rooms perfectly express a warm dwelling.

Designed by HENY YENTY FROM ACITYA DESIGN PAVILION

Photo by KUDOS JAKARTA



Located in the West of Jakarta, this high-end apartment is filled with top-tier furnishing. In the waiting area on the ground floor, a high ceiling with a large scale of windows and an elegant chandelier that caters to a luxury mood intertwines with the architectural features. By design and functional matters, Coulissee's motorized system roller blind helps the intensity of natural light to elevating the mood. It enhances a rich material palette yet still fills with a private atmosphere.

On the other facilities, still dominated by an elegant structure, a well-equipped gym on the higher level shows a great palette of premium marble and wood floors. Spacious yet private is the energy filled in each room. Pursuing the same energy, Coulissee's once again enters the room with a smart solution as well as a substantial element to elevate the interior design. With a perfect shade of color, roller blinds complement the architecture and interior design.



The Frame Magran Living



CONTEMPORARY LUX

A multi-brand giant, Magran Living, presents a showroom that perfectly integrates the exclusivity of luxury and contemporary style to creates a rich narrative.

Designed by ALEX BAYU FROM GENIUS LOCI

Photo by COULISSE INK



Well-known for being a distributor of brands that scream trendy and luxurious, Magran Living provides only the best home furnishing. Starting with premium loose furniture brands like B&B Italia, Poltrona Frau, and BoConcept, to bathroom appliances from Kohler, and ended up in a super exclusive collection from Bentley Home. Applying the calm palette with a clean modern look, the whole layout of the showroom shows an interesting ambiance of a dream home. Located in the hype spot in South Jakarta, Magran Living deepens the prominent design value in every corner of the space.

With the help of Alex Bayu from Genius Loci, and in collaboration with Coulisse, a true spirit of inspiring life is brought through every corner. The alignment of large furniture from Maxalto seamlessly makes a way to be adored, yet feel light to be arranged in a fitted space. Side by side, the bedroom and the living room arrangement create a major wave of warm mood but also filled with a 'silent' luxurious treatment. Intending to elevate the look, a smart window solution from Coulisse's RF-VALENCIA0100- Color White Motorised Battery CM03-E maximizes the private and mysterious atmosphere.



The Frame St. Regis Residence



COMFORT IN TUNE

Shade of natural colors surrounded the whole space creating a burst of warm atmosphere. Align with comfort, each space harmonizing in calm and natural tone.

Designed by LAURENCE HOWELL FROM INDEZ DESIGN

Photo by COULISSE INK



When it comes to setting the earth tone in very well color coordination, this private residence is winning big time. Building up the volume of space in an elegant way successfully captivated each room. Using the lightest beige as a foundation and adding layers slightly darker for the interior element are the concepts that repeat in purpose. Precisely, it gives the room an appealing effect but still in a calming tone. Natural lighting also plays an important role in every space.

Walking through the residence—from the living room, master bedroom, and secluded workspace, generous size of windows play a big part as the bridge between the breathtaking cityscape view

and the comfortable yet elegant indoor area. However, a strong light intensity also needs to be filtered. A double roller blinds Titan color from Coulisse designed with a double layer of transparent fabric and non-transparent fabric in strippy patterns seemingly adding a contemporary sight to the living room. Meanwhile, the all-time favorite roller blind, RF-VALENCIA0200- Col. Gardenia, makes an elegant appearance in the master bedroom, complementing the clean and serene ambiance. On each space, the window becomes a remarkable point of interest to create the whole interior arrangement. Indeed, a well designed residence with a mindset of creating a cozy realm yet timeless.



The Collection

Explore the world of Coulisse—the premium window covering—which has a wide range of collections from the best-sellers, the newest fabrics, and other innovative yet stylish window solutions.

The Collection

Best Seller Roller Blinds Collection

Valencia

Within these wispy layers lies a surprising strength, born from the subtle irregularities of the yarns. The refined fabrics elevate the collection to a new level with a soft and natural look.



Munchen

The Munchen Collection transforms sunlight into a symphony of soft hues, its sheer fabrics filtering daylight to create a serenely lit ambiance. A touch of sophisticated elegance for your haven.



Salvador

Crafted from delicate Trevira CS, these exquisite textiles come in a spectrum of essential colours. These luminous fabrics bring a touch of understated elegance and sophisticated light control to any space.



Mombassa

This fabric embodies a modern aesthetic with a touch of textural intrigue. Delicate, natural fabrics create a warm and inviting atmosphere, while the soft colour palette lends a touch of timeless elegance.



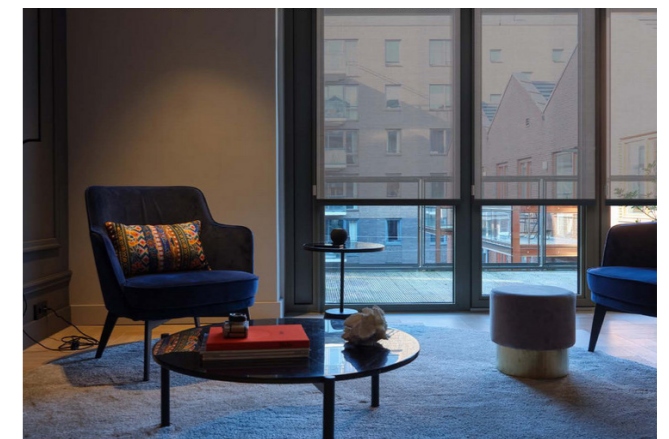
Hampton

This collection captures the essence of linen in a whisper-soft fabric. Its delicate weave lends a touch of opulence to your space, while the essential colour palette ensures timeless versatility.



Melbourne ★

This fabric evokes the enduring beauty of nature with its robust, natural linen aesthetic, effortlessly drapes expansive windows, creating a sense of grounded serenity with timeless allure.



Esvedra

With refined natural textiles, in soft, muted hues, this fabric creates a serene connection with the outside world. Perfect for discerning tastes, they add a touch of sophistication and luxury to any space.



Marrakech

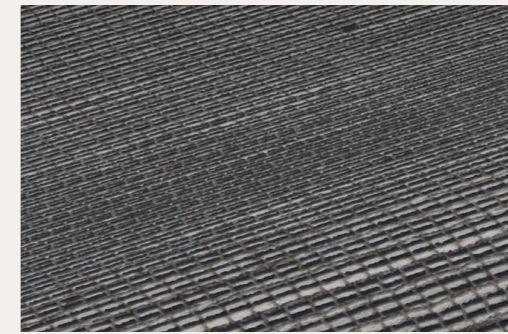
Woven with a gentle natural linen aesthetic, this collection offers a touch of organic texture. Delicate irregularities in the yarns enhance the natural feel, further emphasised elegance.



New Fabric Collections

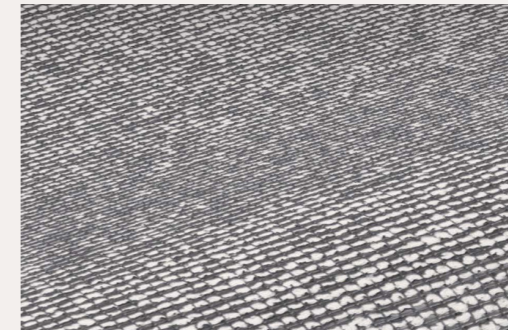
Corsica

Embrace the future of fashion for your home. Corsica transcends mere fabric; it's an experience in light, luxury, and conscious living. Transform your surroundings and discover a new standard of beauty.



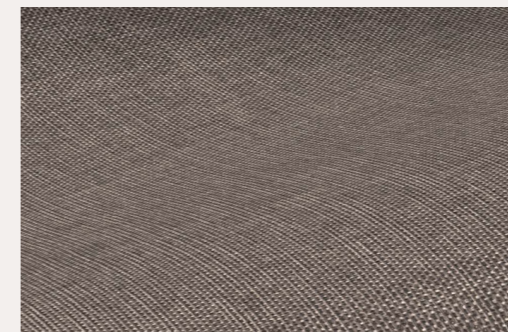
Capri

Embrace the unparalleled refinement of Capri. Elevate your surroundings and discover a world of light, luxury, and conscious design. Crafted with 80% recycled polyester, it embodies sustainability with sophistication purpose.



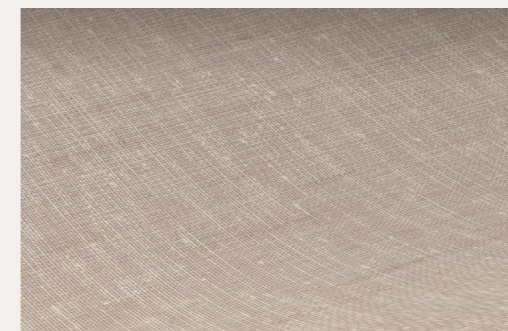
Bergen

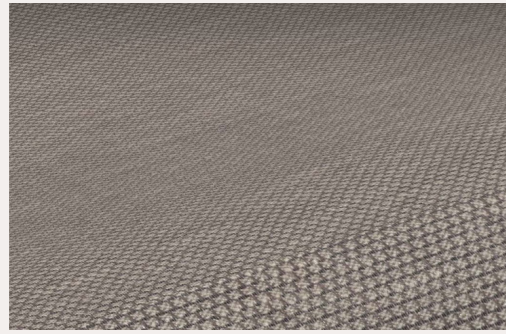
This airy material embodies both beauty and purpose, its subtle texture echoing the lines of modern architecture. Bergen Sheer seamlessly blends form and function, instantly elevating any space.



Lancaster

Sheer fabrics, reminiscent of natural linen, dance with a whisper-light touch. Crafted with authentic yarns whisper against the skin, offering a touch of understated luxury. Embodies natural texture with an aesthetic approaches.





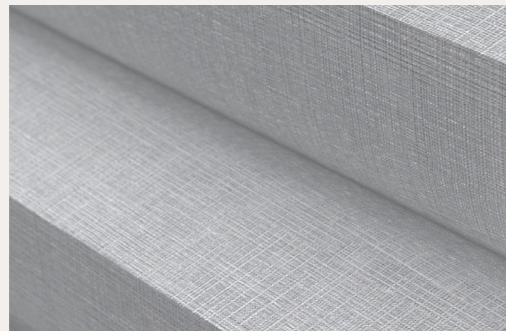
Lara

Indulge your senses and experience through the sophisticated texture and elegance of Lara. Feel the modernity with natural palettes with high on texture. Imagine a material so exquisitely woven, it elevates your living spaces.



Sofia

Crafted for comfort and timeless style, the fabric's textured weave evokes the heritage of tweed. A texture that detailing the interior mood. Available in a calming palette of neutrals, Sofia creates a haven of tranquillity in any room.



Hudson

This season's duo-tone sheers redefine window dressing. Classic neutrals and textured linen weave create depth, while innovative fabrics diffuse light for a calming ambiance. A stylish and functional must-have.



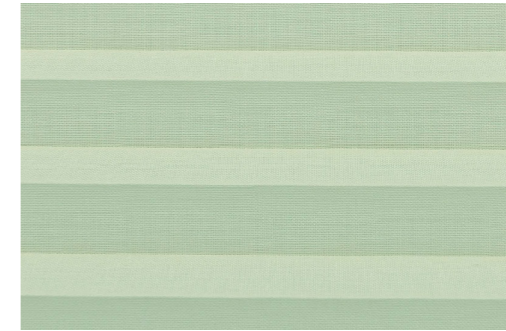
Denver

Denver unfolds timeless elegance, with six nature-inspired hues to curate your perfect interior vision. This luxurious, dim-out fabric boasts captivating richness, expertly woven with advanced dyeing techniques.



Tigris Perla

Tigris Perla offers matte finish with a light sparkle. It creates a timeless yet lively look. Its Perla-backed fabric reflects light & heat for comfort, with 22 colours for endless design possibilities.



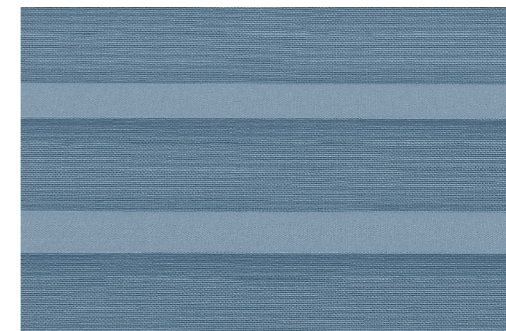
Venice

Venice drapes light in a whisper-soft embrace. Its sheer, matte linen texture adds a touch of understated elegance, while eleven subtle hues offer effortless coordination with any design scheme.



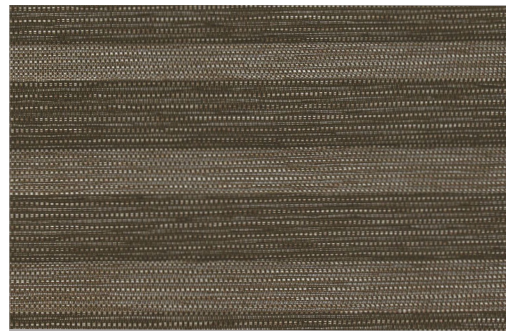
Lund

Lund's black-out blackout pleated fabric gives your space a natural and textural aesthetic with both solid colours and duo-tone. A black-out film provides superior light blocking, ideal for skylights.



Bari

Bari pleated fabric combines a natural linen look with flame-retardant Trevira CS yarns, offering both functionality and style. Its genuine textile feel and wide range of 23 colours.



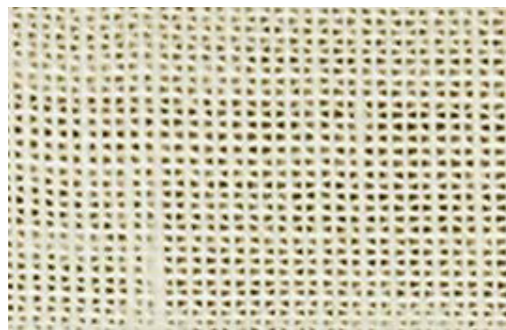
Jakarta

Jakarta, a luxurious sheer fabric, uses coloured yarns to create a textural weave that softly filters light. Available in 6 captivating colours, this pleated delight offers a unique blend of depth.



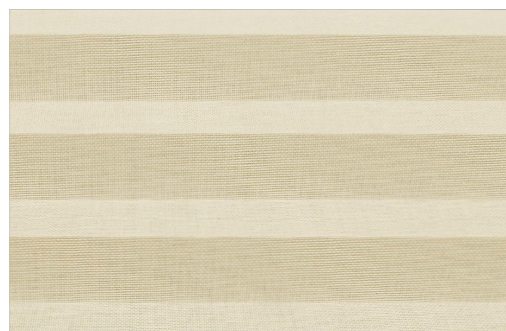
Palermo

Rich and textured fabric, this non-transparent yarn boasts a beautiful matte finish and natural feel. Slub yarns with intentional thickness variations add a touch of liveliness.



Sinai

A timeless classic collection, crafted with structured effect yarns and a refined weave, it boasts exceptional light-filtering properties. The 5% linen blend ensures a natural touch.



Milan

Yarn Fabric Milan blends top-notch flame-retardant properties with a natural textile aesthetic. Made from 100% Trevira CS, its transparent fabric features, creating a unique texture.

Motion Blinds Matter

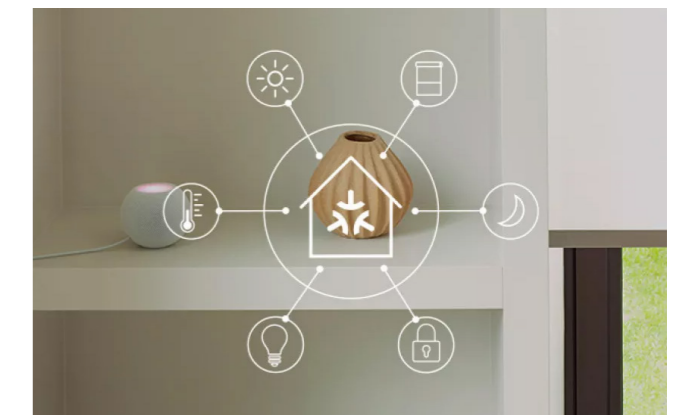


Unveiling MATTER: Redefining Window Coverings

Matter is a revolutionary communication protocol for smart home devices, allowing them to interact seamlessly across different ecosystems like Google Assistant, Amazon Alexa, and Apple HomeKit. Simply look for the Matter symbol when purchasing smart home devices for effortless connectivity and use.

The Minds Behind Matter

Matter, created by the Connectivity Standards Alliance (CSA) with +400 tech giants like Google, Apple, Samsung, and Amazon, promises reliable, secure connectivity. This new standard ensures seamless device compatibility, simplifying life for consumers and development for manufacturers. As CSA states, Matter is "a seal of approval" for smart home integration.



Before it Matters

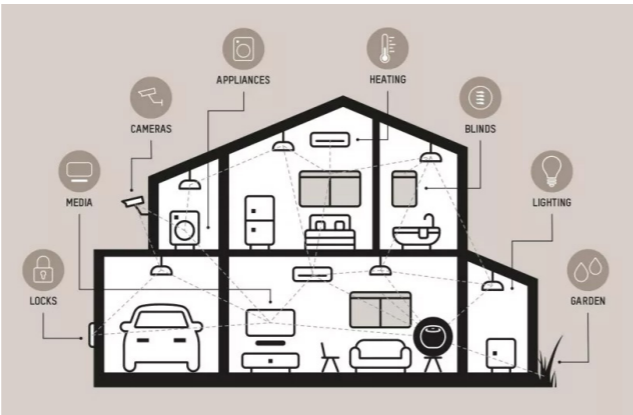
While the smart home promises effortless automation, the reality is often complex, with diverse devices requiring multiple apps and incompatible standards like Zigbee and Z-Wave. Matter aims to resolve these issues by unifying communication, allowing all smart devices to work seamlessly together through a single system, simplifying your smart home experience.

Motion Blinds Matter



Because our homes, Matter.
Smart homes are about to get smarter, and simpler. Matter, a new communication standard, ensures seamless integration between devices from different brands. Imagine controlling lights, security sensors, and even your TV with just one app or voice assistant! This eliminates compatibility headaches, letting you focus on creating a truly unified smart home experience.

Matter-over-Thread
While Matter uses Wi-Fi or Ethernet for connection, Thread is its secret weapon. This mesh network makes smart devices faster, more reliable, and uses less energy. Plus, it strengthens with every added device, eliminating the need for a bridge.



Smart window coverings
Matter's arrival in October 2022 with version 1.0 brings a boom for smart window coverings. With blinds and shades among the first certified devices, the industry can tap into the surging smart home market. Expect global popularity for smart window treatments in the coming years.

Motion Blinds Matter

Smart shades for a smarter view
Eve Motion Blinds offer the ultimate in smart window control. Experience the convenience and peace of mind that comes with a truly connected home. It seamlessly integrates with your existing smart home system, eliminating the need for bulky bridges. Imagine scheduling your blinds to adjust throughout the day, creating a lived-in feel even when you're away. Plus, these innovative shades can automatically react to temperature changes, optimising your home's energy efficiency and adding a touch of effortless luxury to your space.



Smart, Stylish future awaits
Forget traditional tassel pulls—the future of window treatments is smart! Matter, the latest industry standard for smart home devices, is revolutionising window coverings. At CES this year, Matter stole the spotlight, with Eve Motionblinds earning a prestigious award for their seamless integration. As tech giants jump on board, intelligent window coverings are set to become the next essential design trend.

The View

Rebuilding and Reconnecting

Culture is a strong identity for any country, especially Indonesia. In the current day when modernization dominates our world, we forget the value and identity of our roots in architecture. If cultural architecture no longer exists, it is somehow connected to the negative impact including the destruction of the living of Indigenous people who preserve the culture itself.

Starting with that mindset, a CSR organization called YWCAN (Yayasan Widya Cahaya Nusantara)—one group with INK (Imaji Nata Kirana), started a project focusing on the indigenous community. With the same value, collaborating with UMA Nusantara, a foundation created by renowned Indonesian architect, Yori Antar, started a cultural project that rebuilds traditional houses that are almost extinct.

The Sungai Utik in West Kalimantan where the Dayak Iban Tribe lives has been awarded in New York the Equator Prize for protecting their environment, a customary forest. It means, supporting their cultural life equal to preventing the destruction of the environment. By helping rebuild Sungai Utik's cultural longhouse, we also preserve the symbol of indigenous people.

In June 2024, UMA NUSANTARA and YWCAN, Tirta Gelong Meligai Menua Cultural House won the architectural prize at Indobuild Tech. With this amount of recognition, we keep the spirit to educate people about the richness of Indonesian cultural architecture. It's the beginning of our journey to celebrating Indonesia's heritage to the world.



BEYOND
LIVING

The Art of Bespoke

Being a brand that specializes in custom-made furniture and home furnishing, Beyond Living always brings elegant style to the next level. As they continued to innovate, a brand originally from Surabaya unfolded an extraordinary exhibition which will be held in October 2024, one that celebrated the seamless fusion of beauty and functionality in design. This upcoming exhibition is a testament to the art of bespoke craftsmanship, bringing together some of the visionary minds in the design world. Not only showcasing the brand's commitment to luxury and elegant style but also highlighting the unique perspectives of chosen well-known designers who collaborated to create a series of bespoke pieces that redefined the boundaries of form and function. Each of the designers will present luxury bespoke furniture that marks a realm of inspiration in the interior and furniture design industry.

Supporting this remarkable exhibition, Coulisce INK will also showcase its premium products by collaborating with two designers, PAI and Endramukti. Known for their avant-garde approach to design, PAI chooses to use motorized roller blinds of Trevira CS Brasilia fabrics which helps to enhance a classic yet modern style of interior. On the other hand, Endramukti—a master of spatial harmony with a twist of heritage elements—highlights the sheer white fabrics from The Valencia collection which has an irregular texture of yarns that adds value to the soft and natural look.

This exhibition will undoubtedly influence future trends in the luxury market, reminding us that true luxury lies in the ability to create something that is both beautiful and functional—a perfect reflection of the world we live in today.



COULISSE | INK

since 1992

Phone | (+62) 21 29376430 (+62) 21 293643431

Whatsapp | (+62) 812 8383 0448

Email | info@coulisse.co.id

Website | www.coulisse.co.id

Instagram | [@coulisse_ink](https://www.instagram.com/coulisse_ink)

Showroom | Jl. Ahmad Dahlan No. 22,

Kebayoran Baru, Jakarta Selatan 12220, Indonesia

Warehouse | Jl. Pangkalan 6, Gang. Masjid No. 38A,

RT.002/RW.002, Ciketing Udik, Kec. Bantar Gebang, Kota

Bekasi, Jawa Barat 17153

